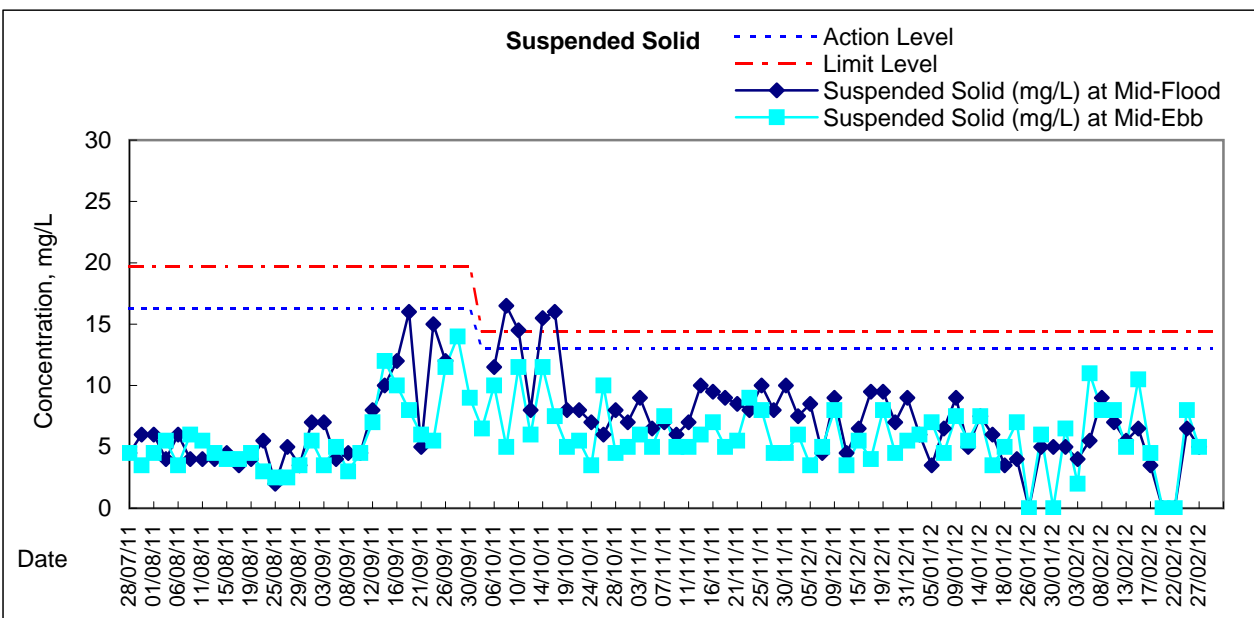
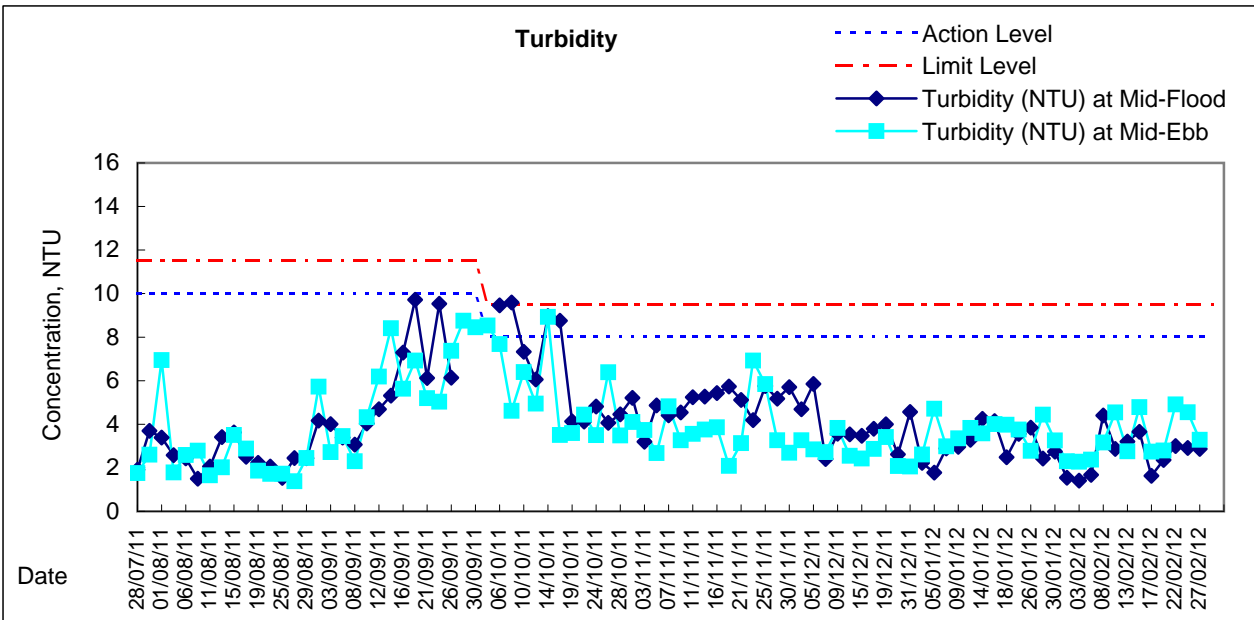
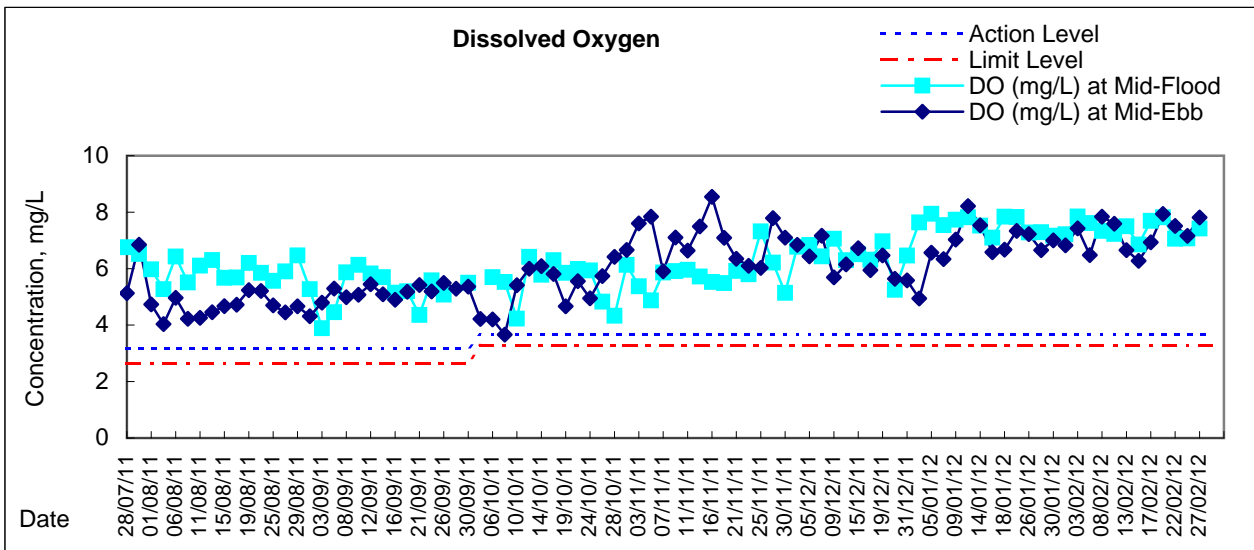
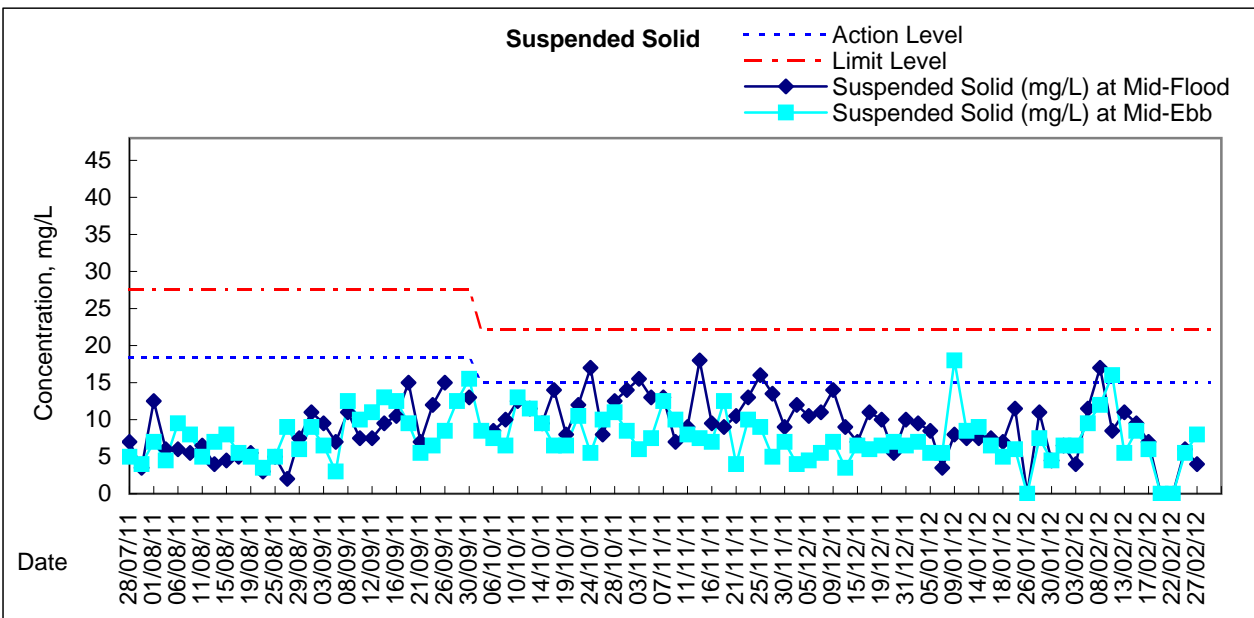
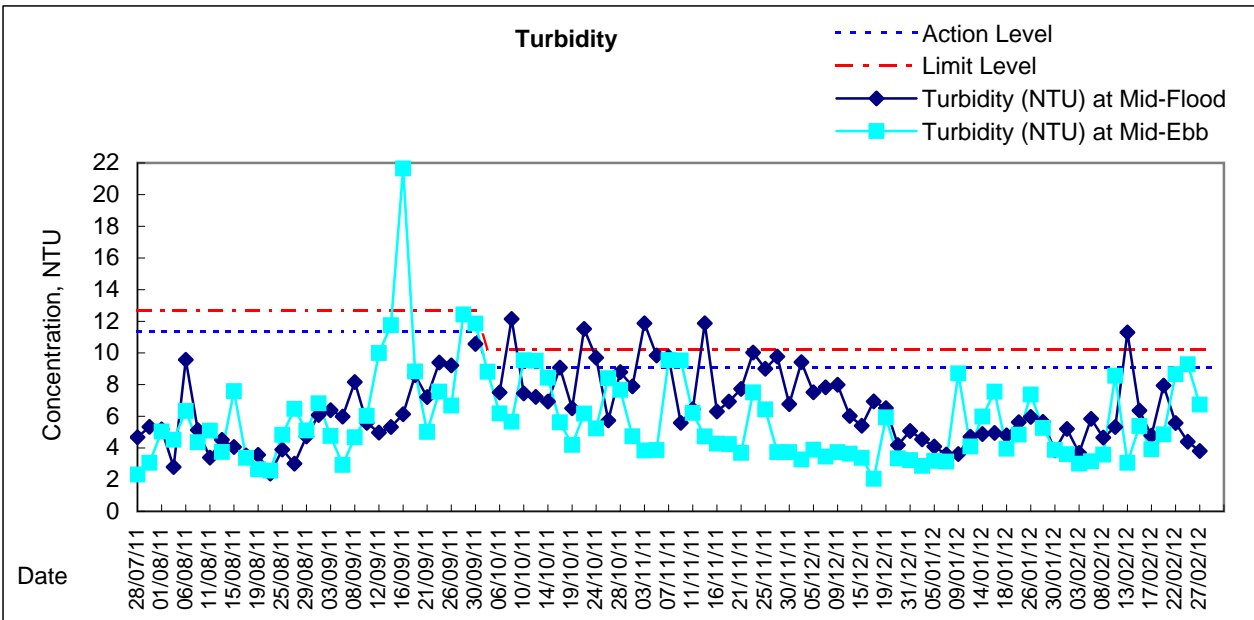
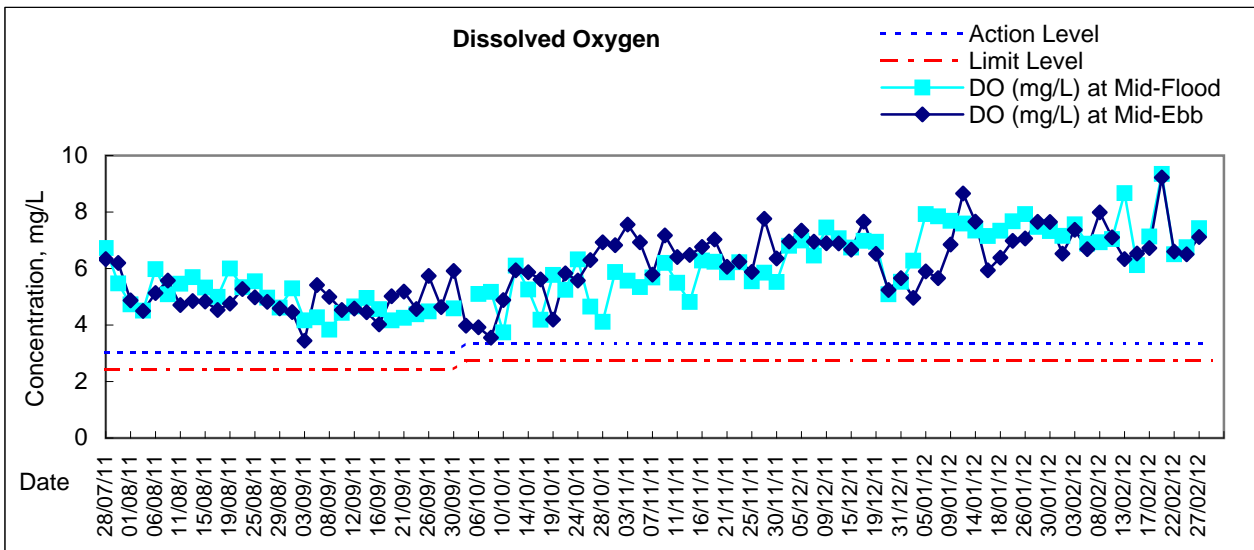
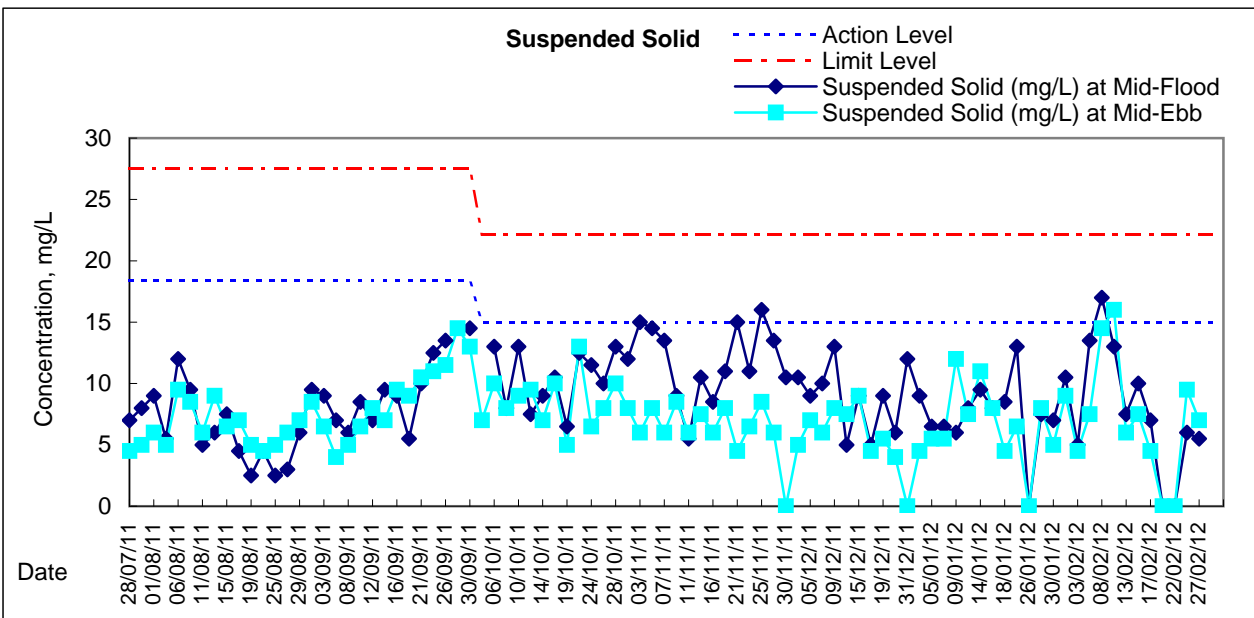
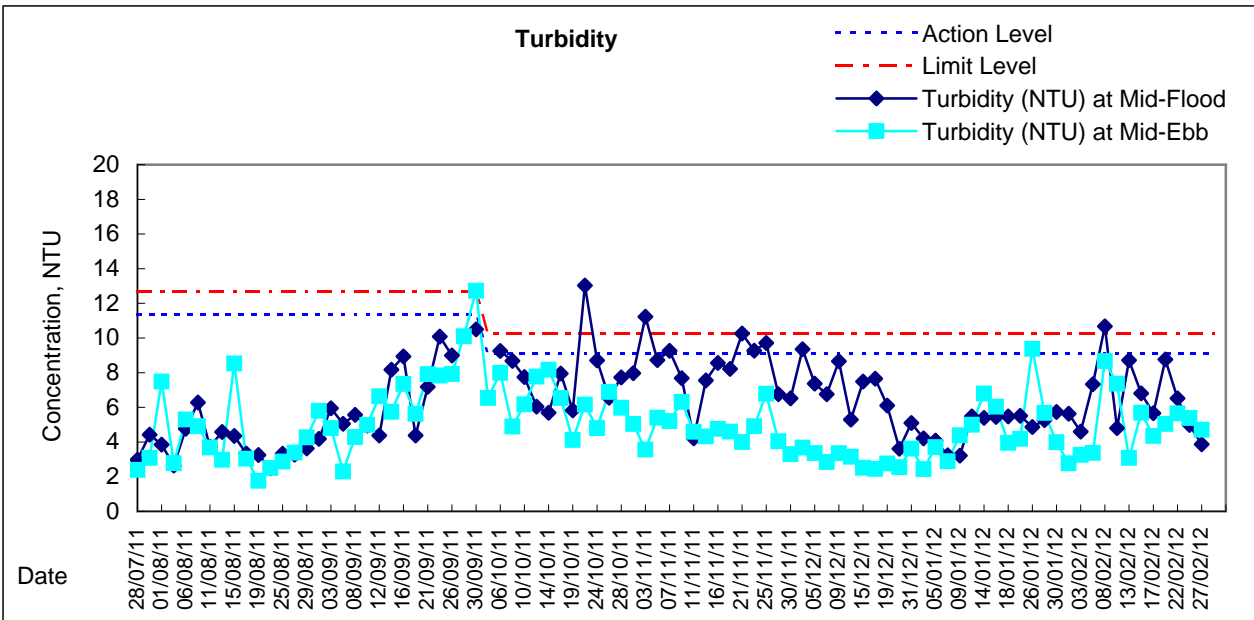
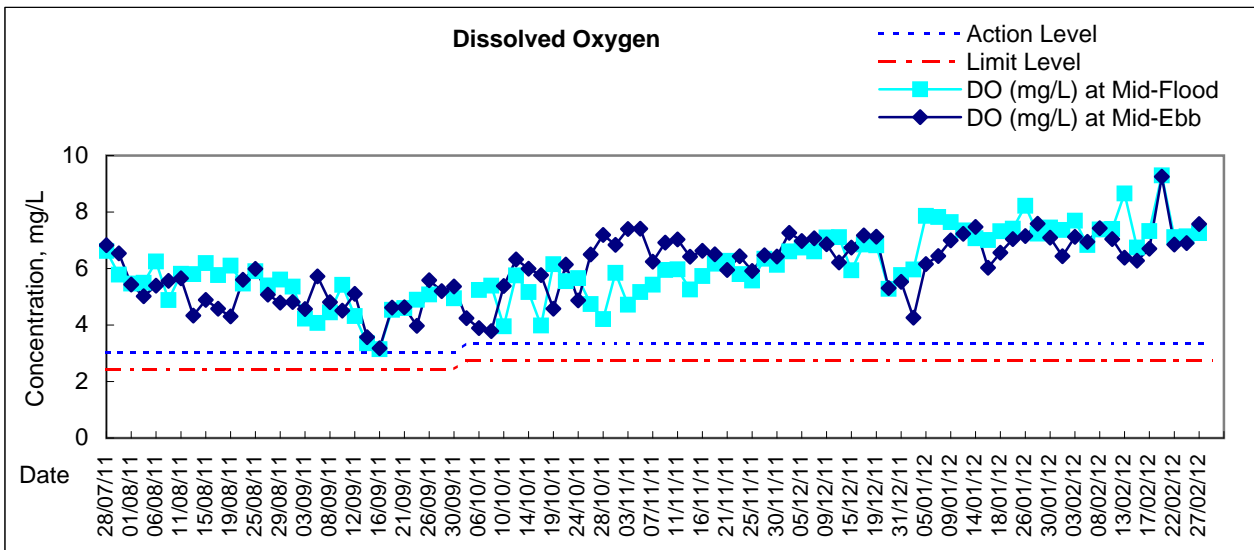


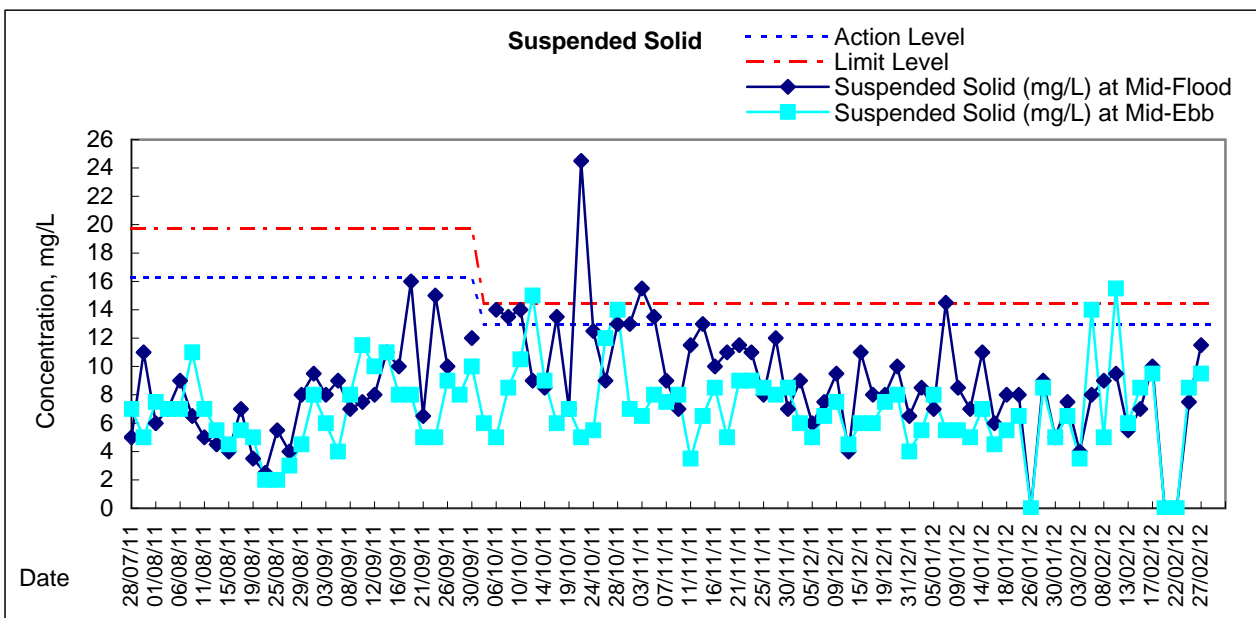
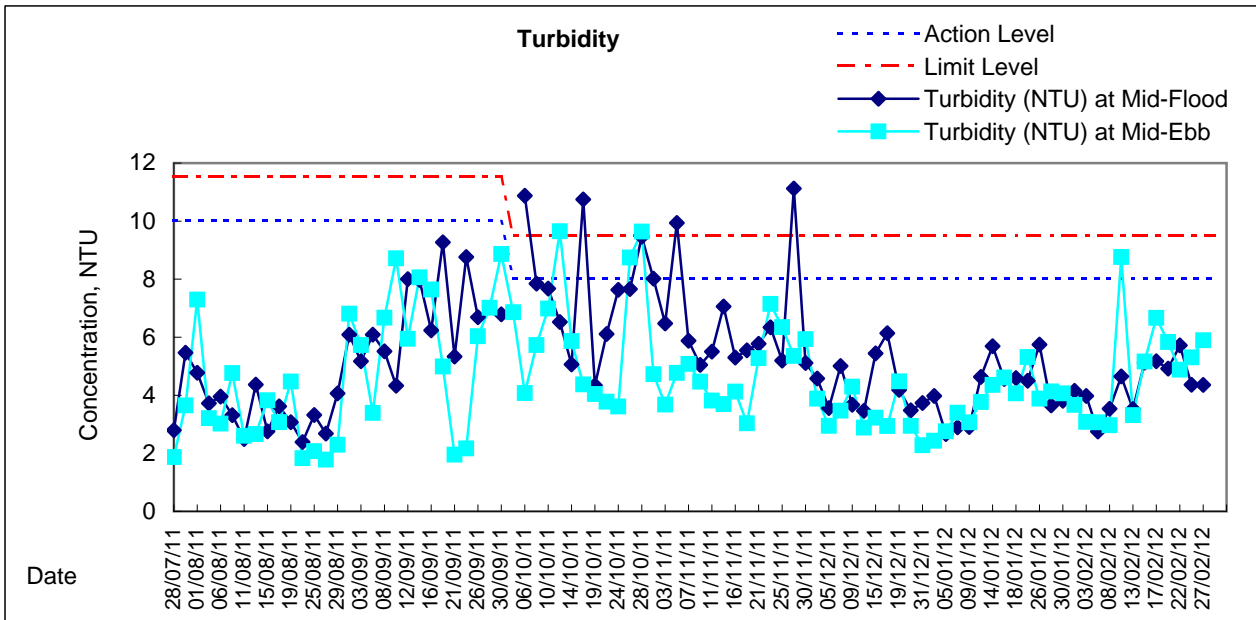
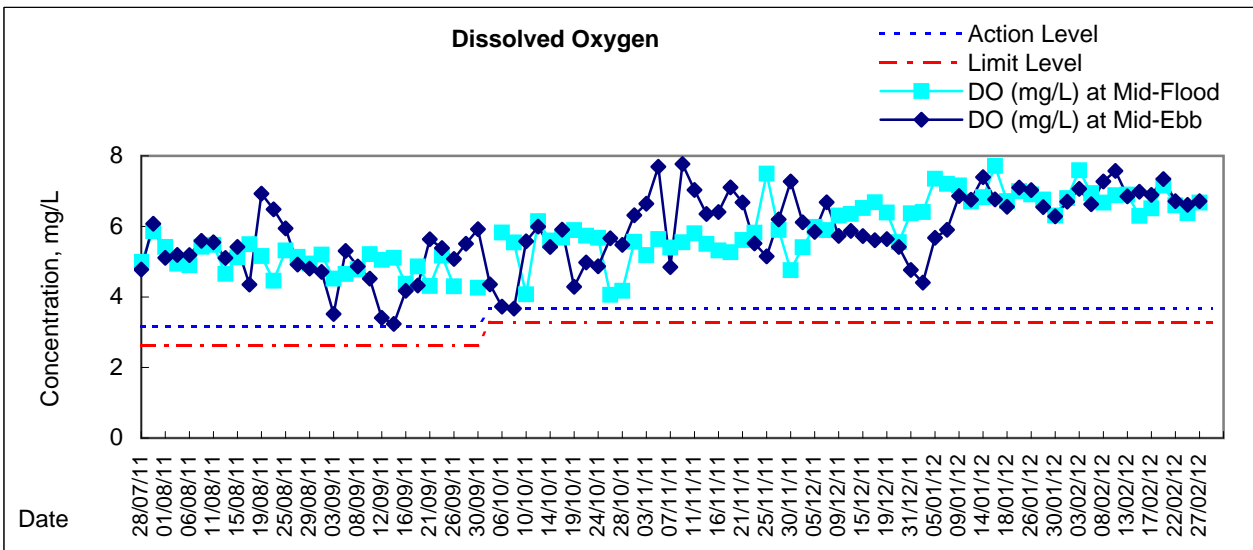


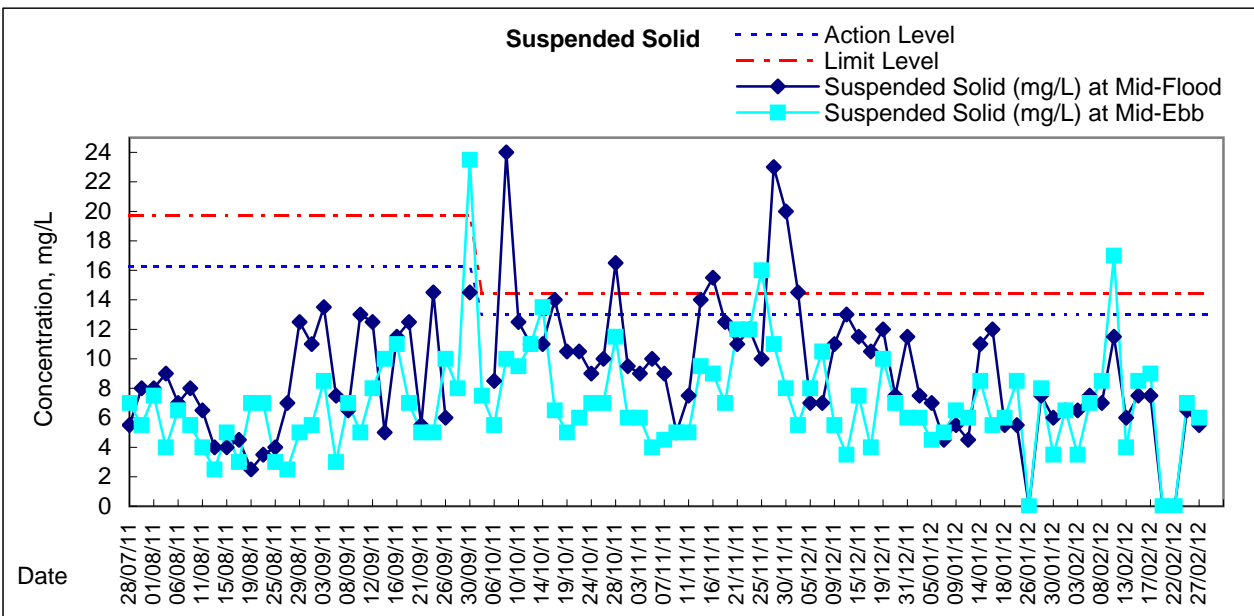
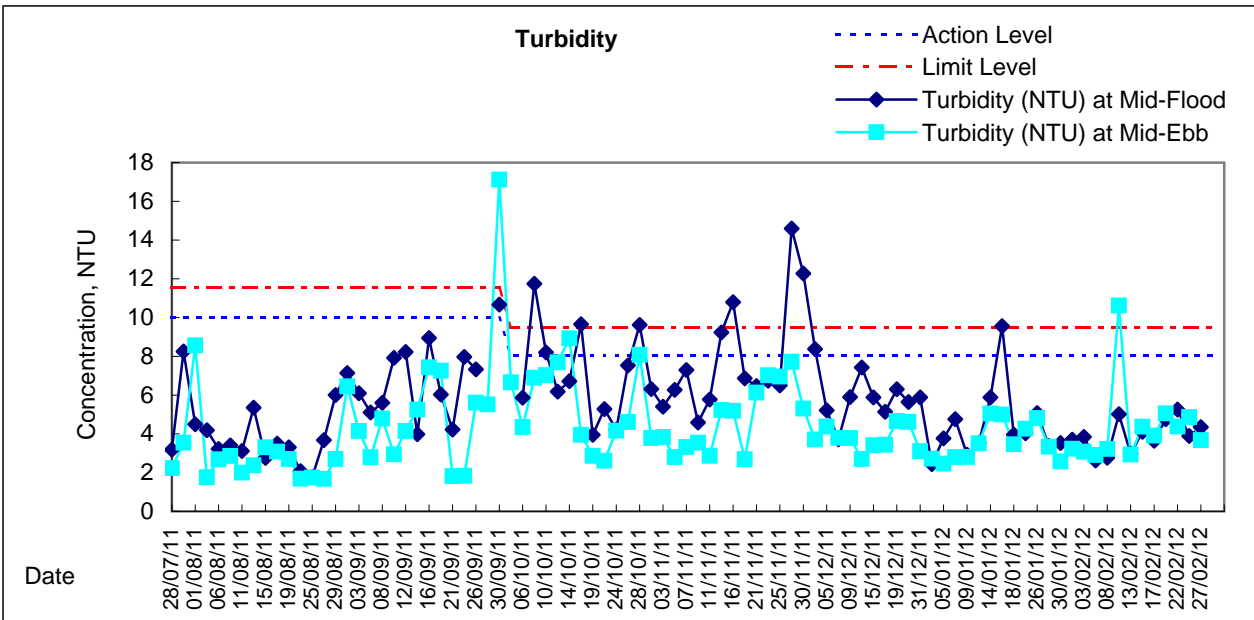
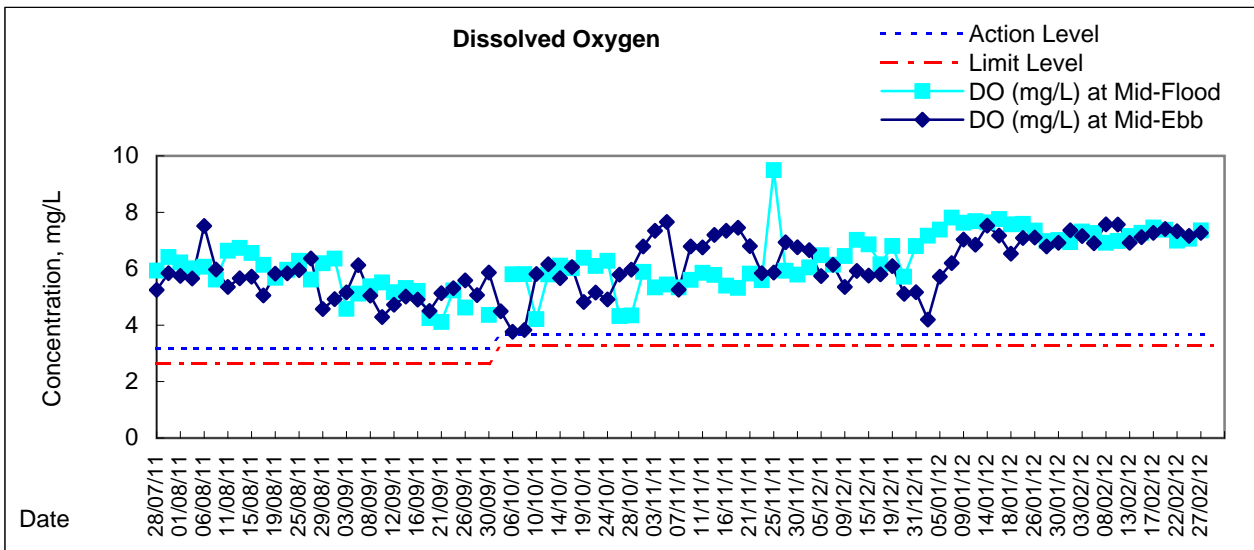
Graphic Presentation of Water Quality Result of WSD17 - Quarry Bay

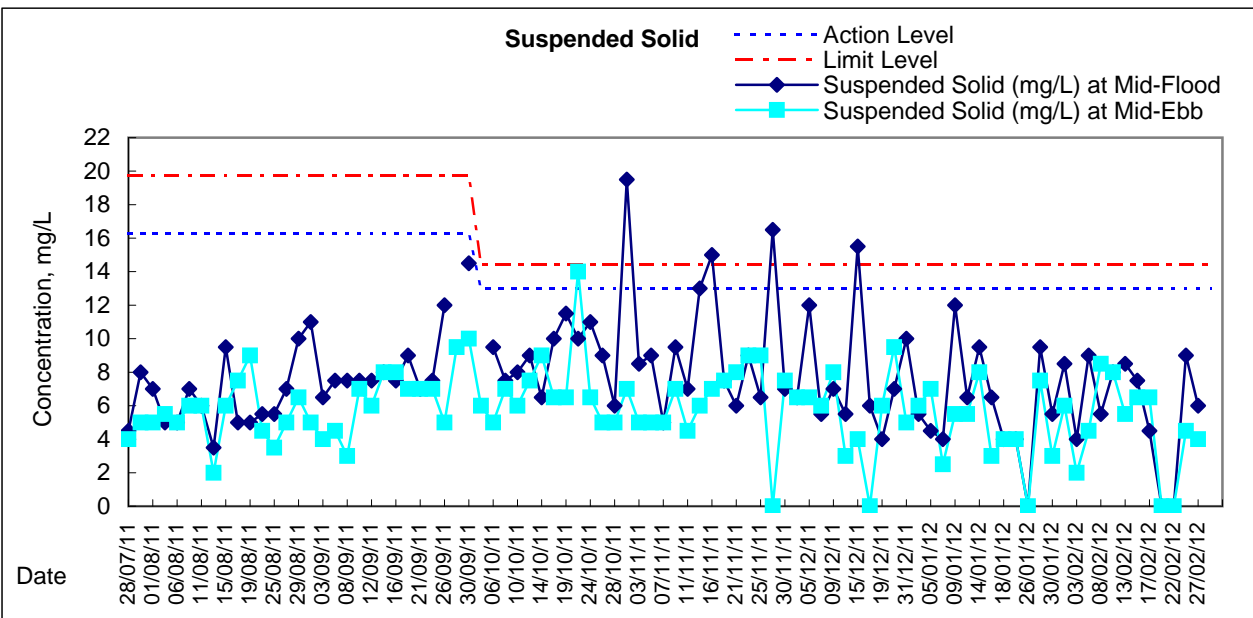
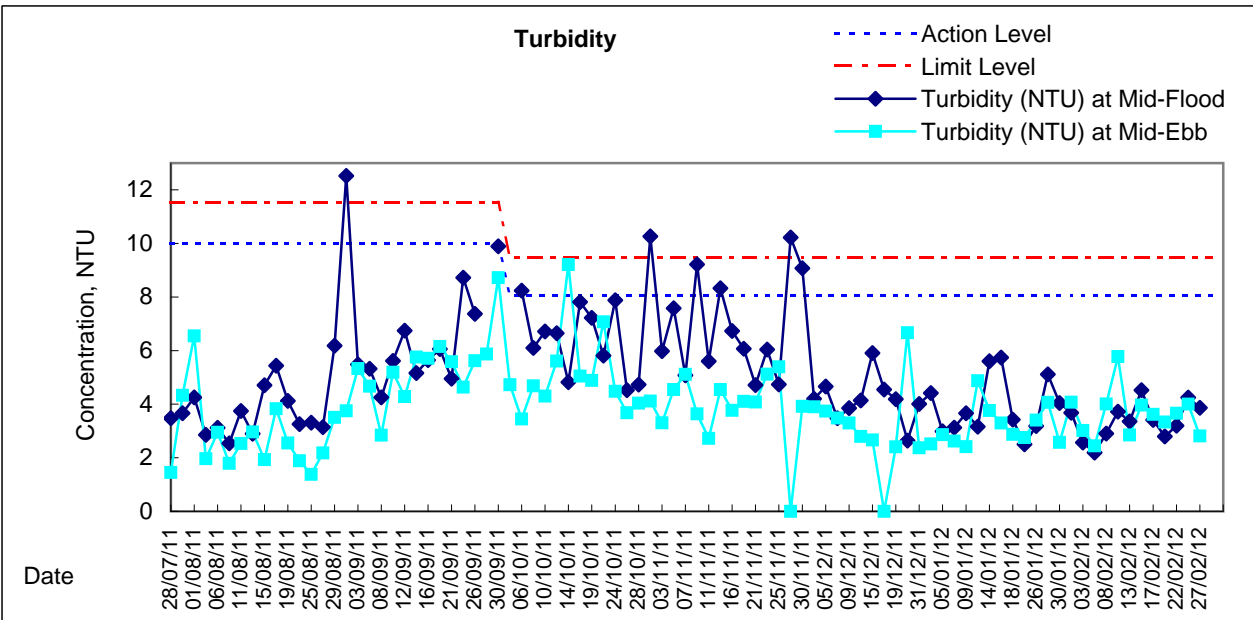
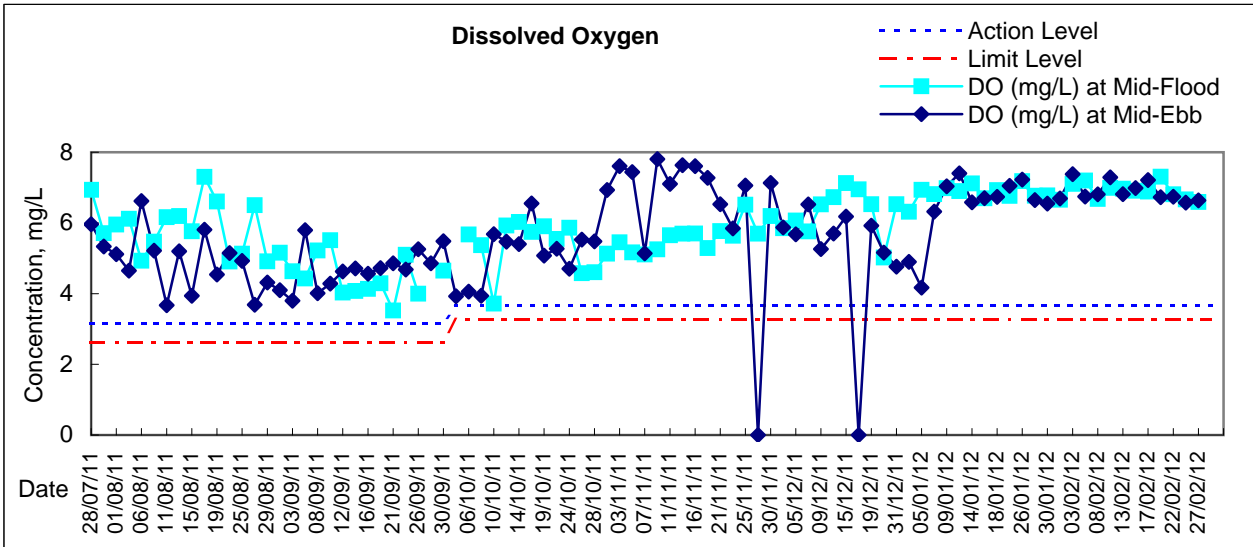


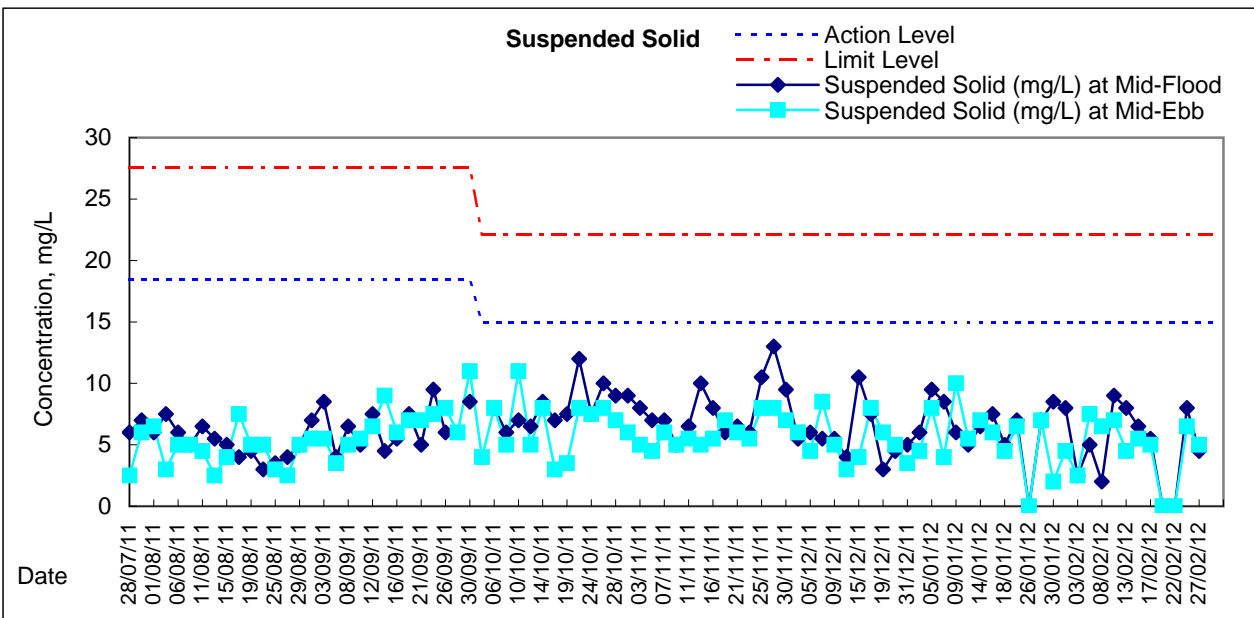
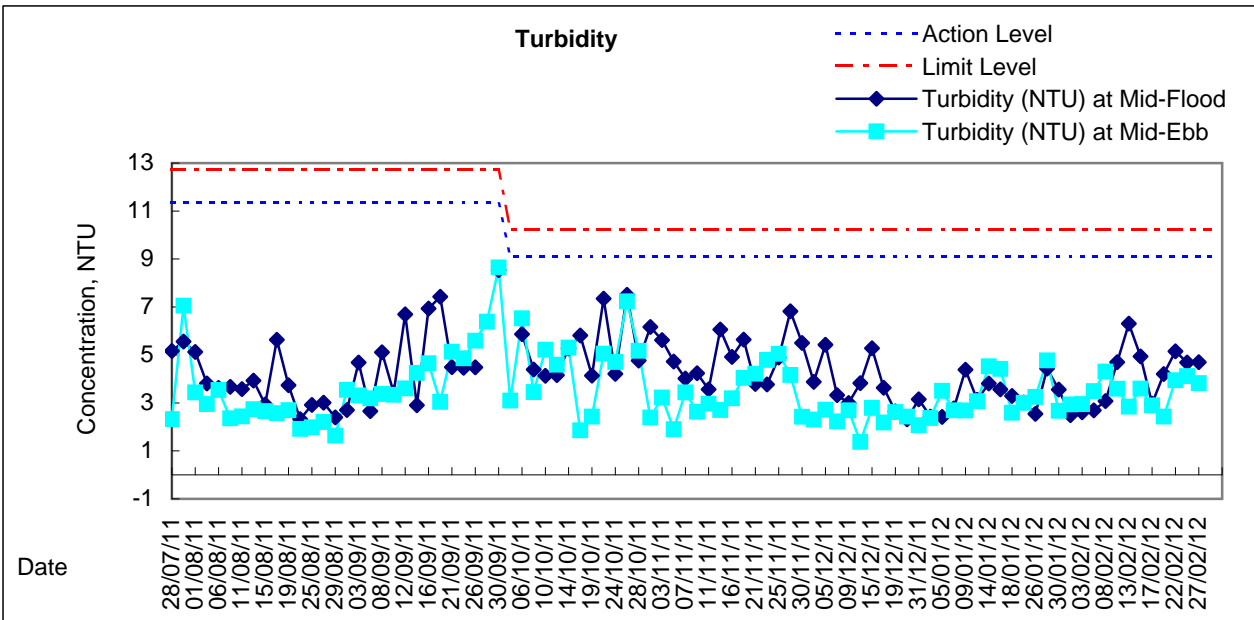
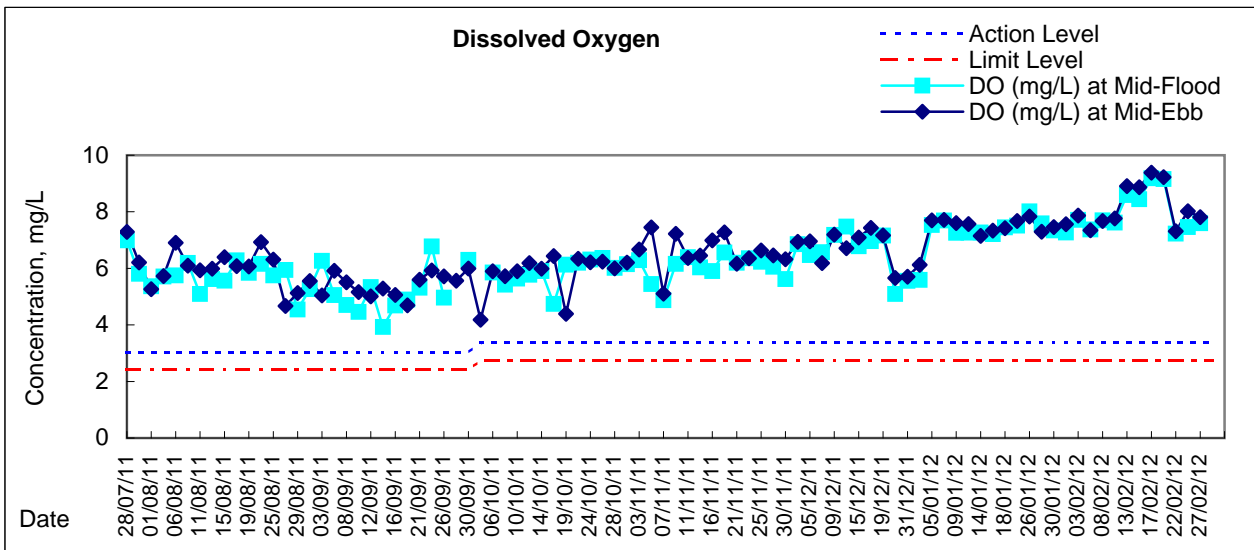






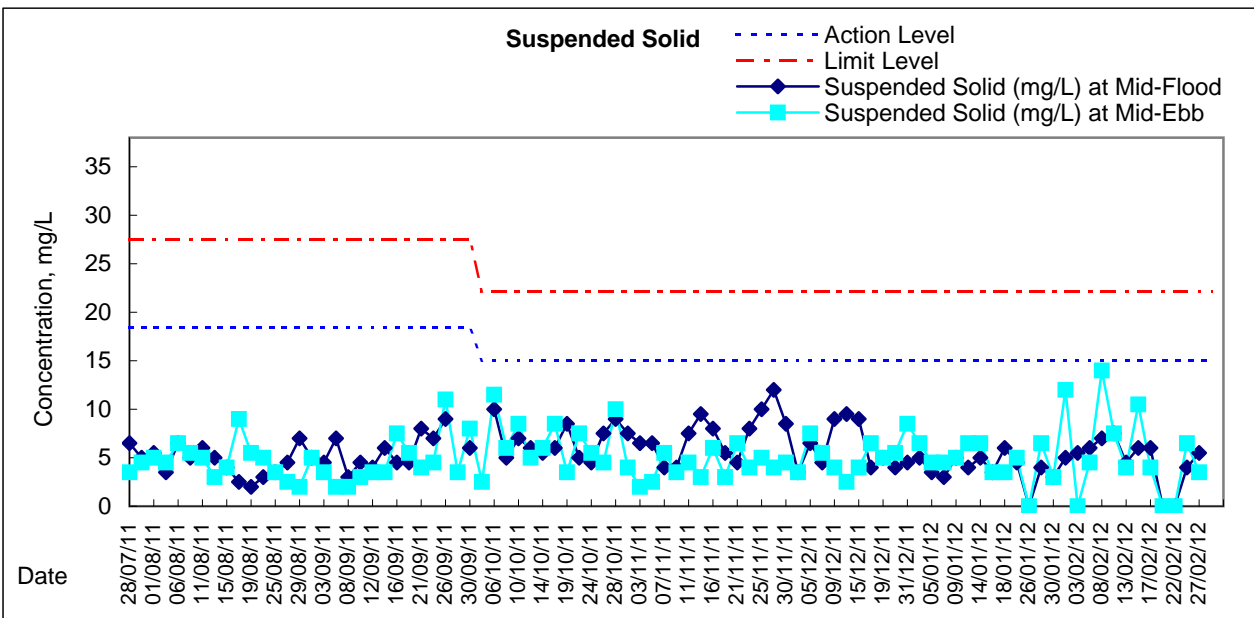
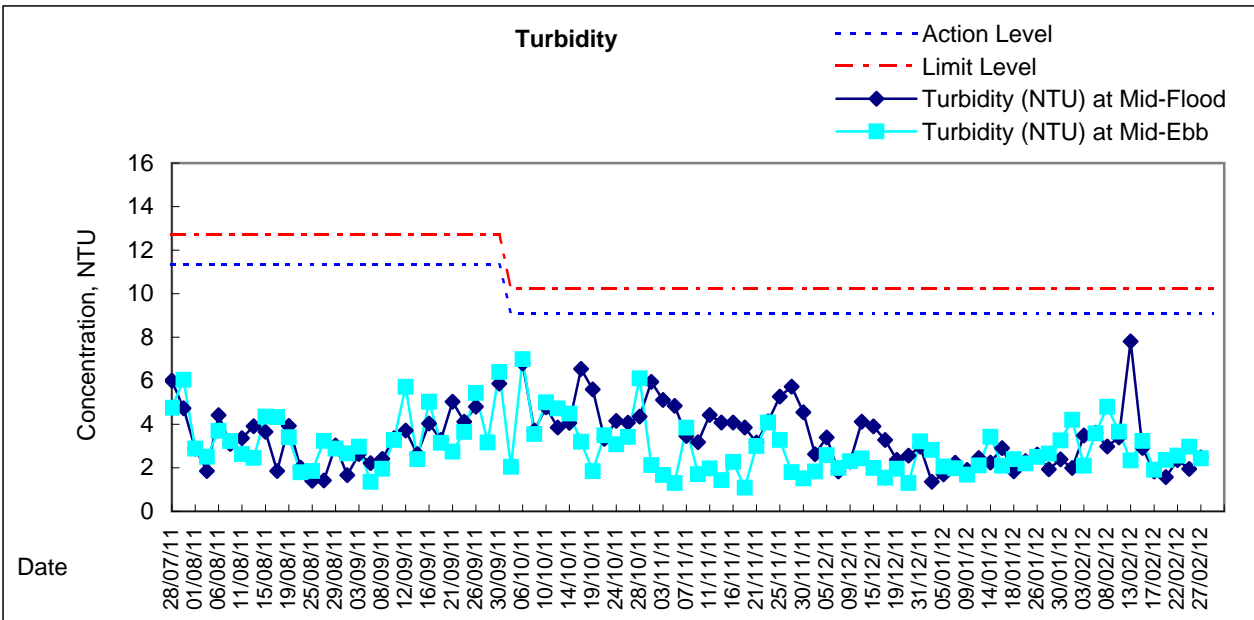
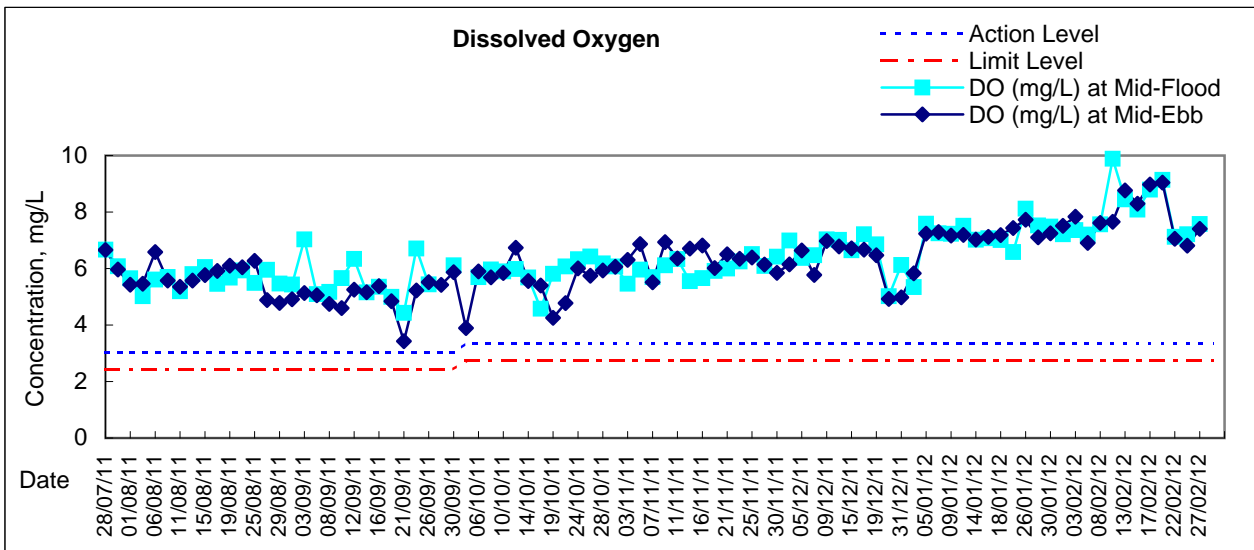


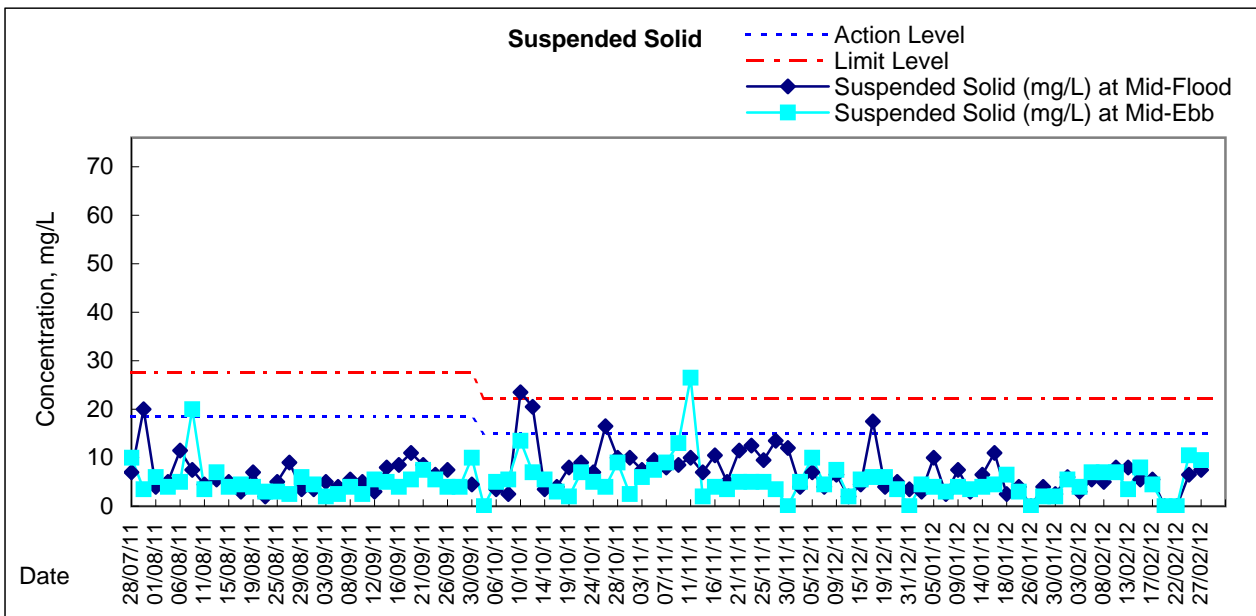
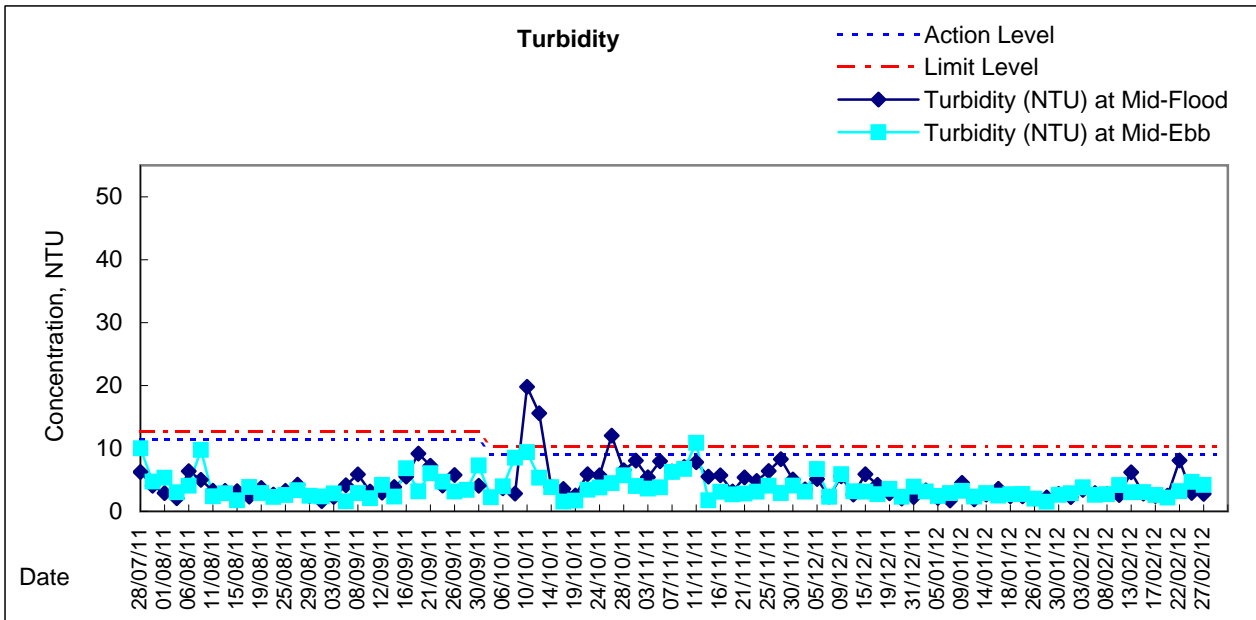
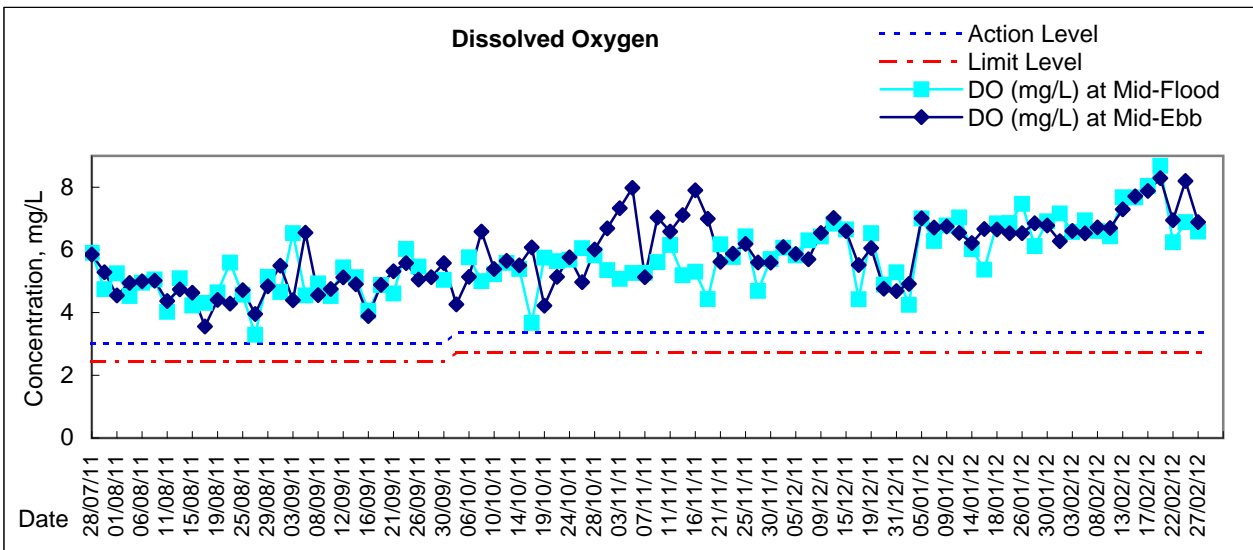


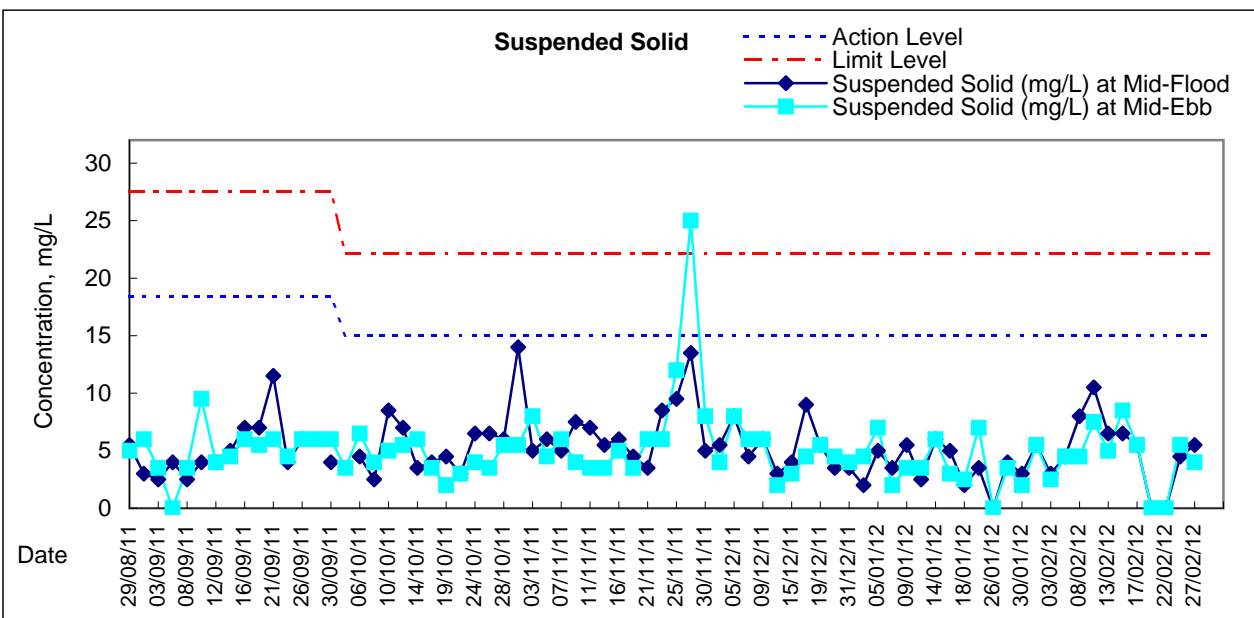
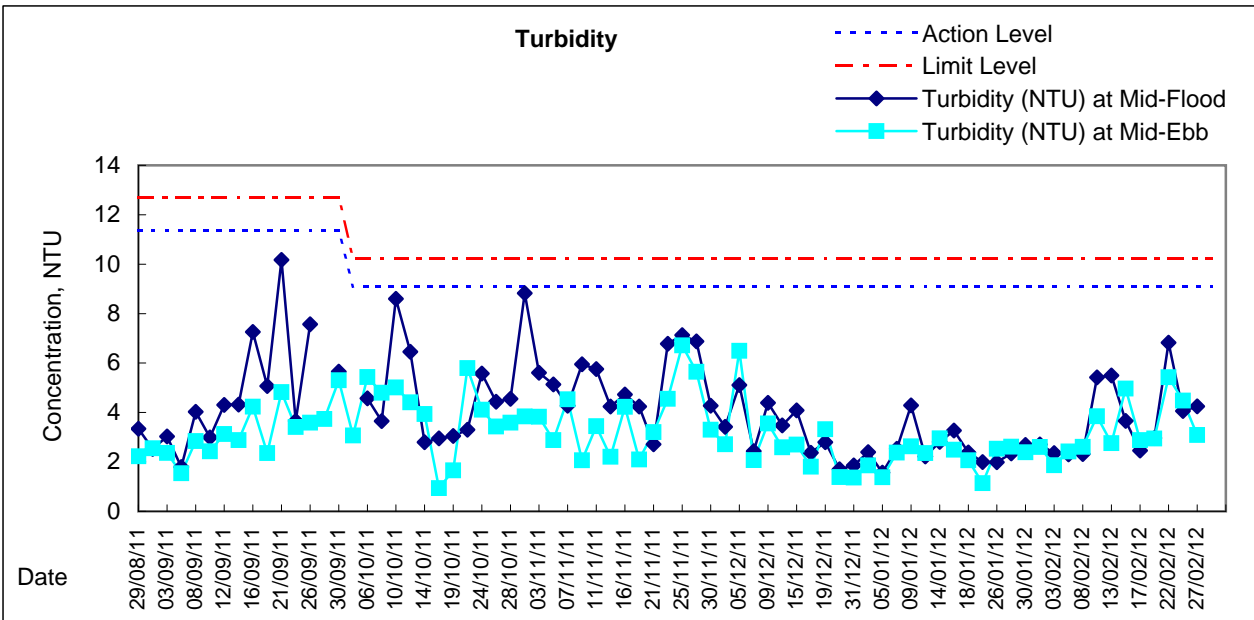
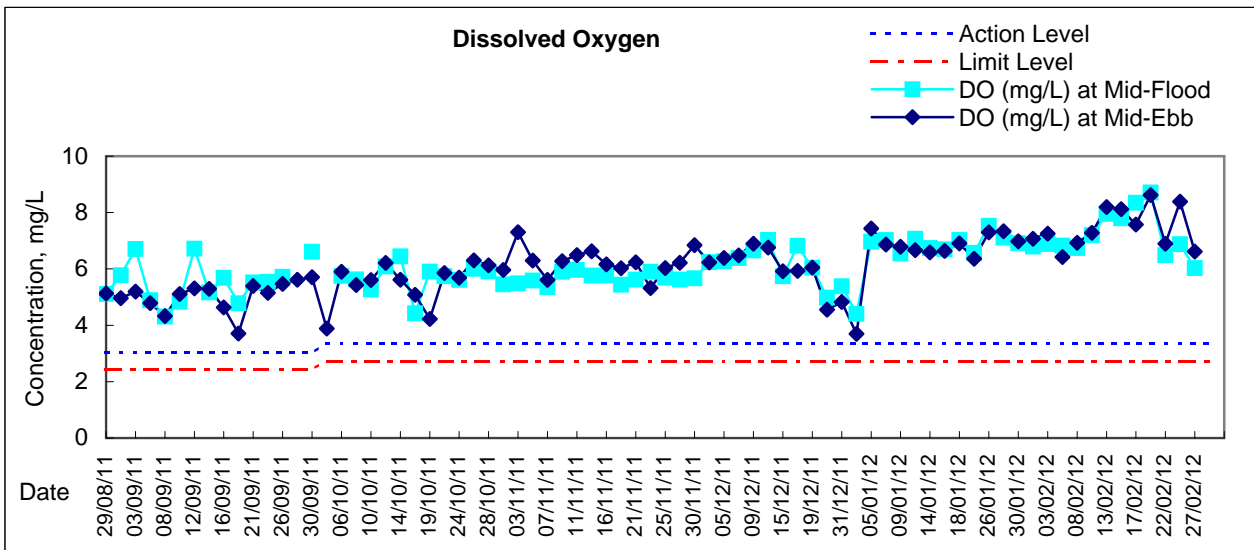




Graphic Presentation of Water Quality Result of C2 - TH / APA / SOC

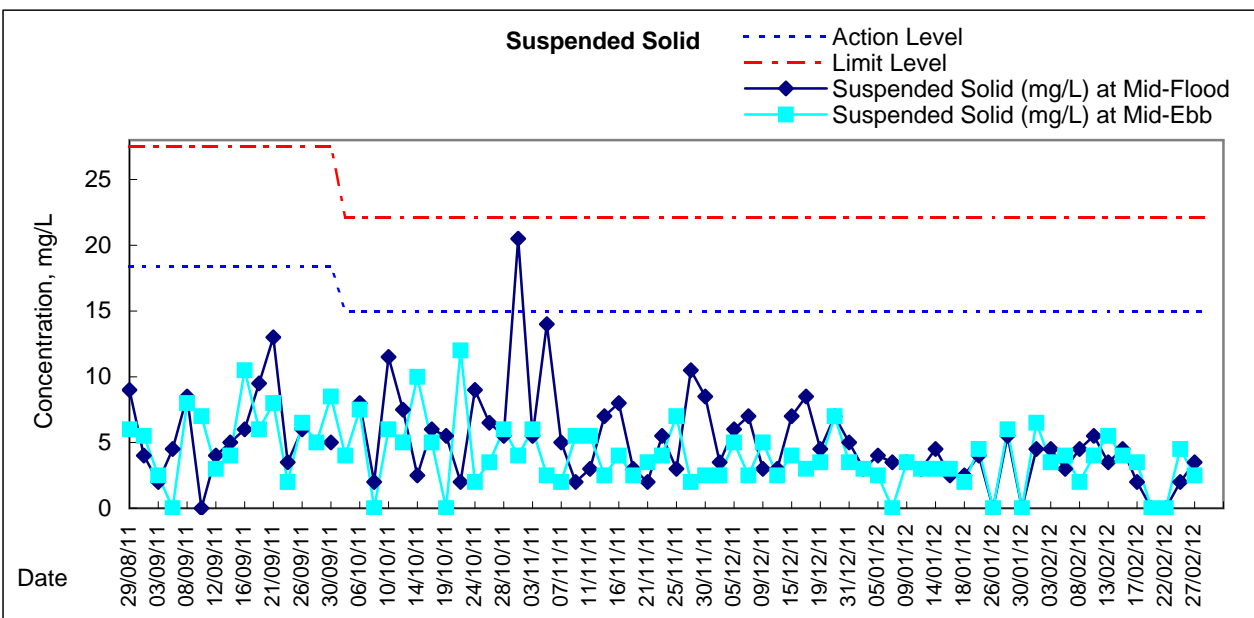
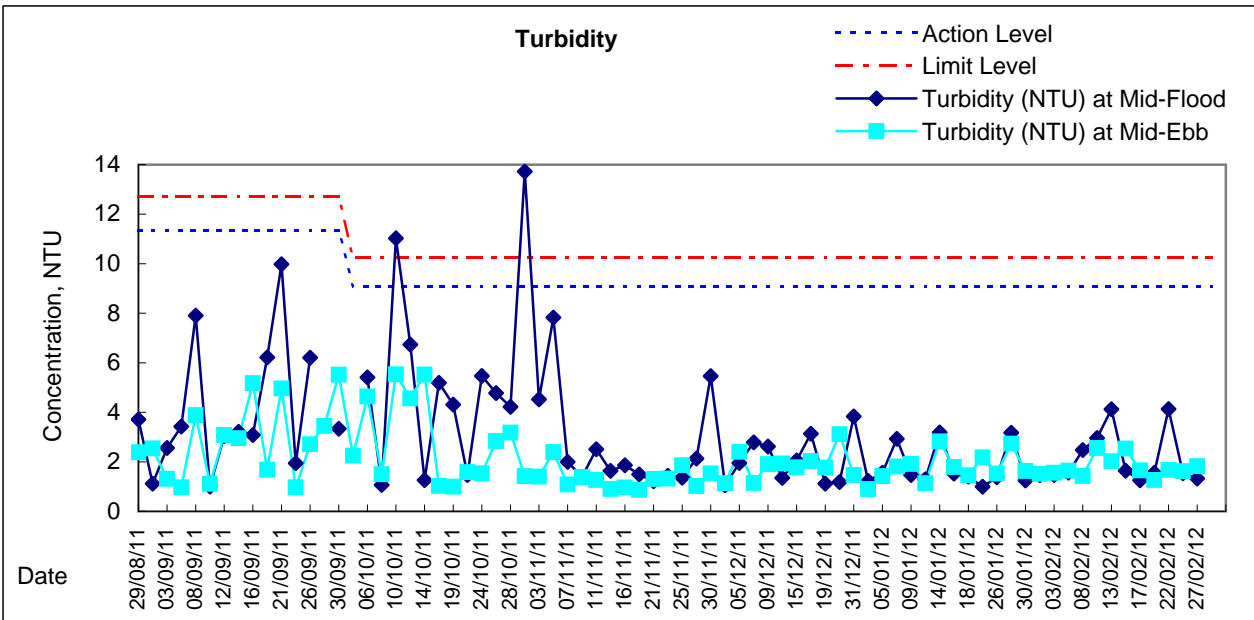
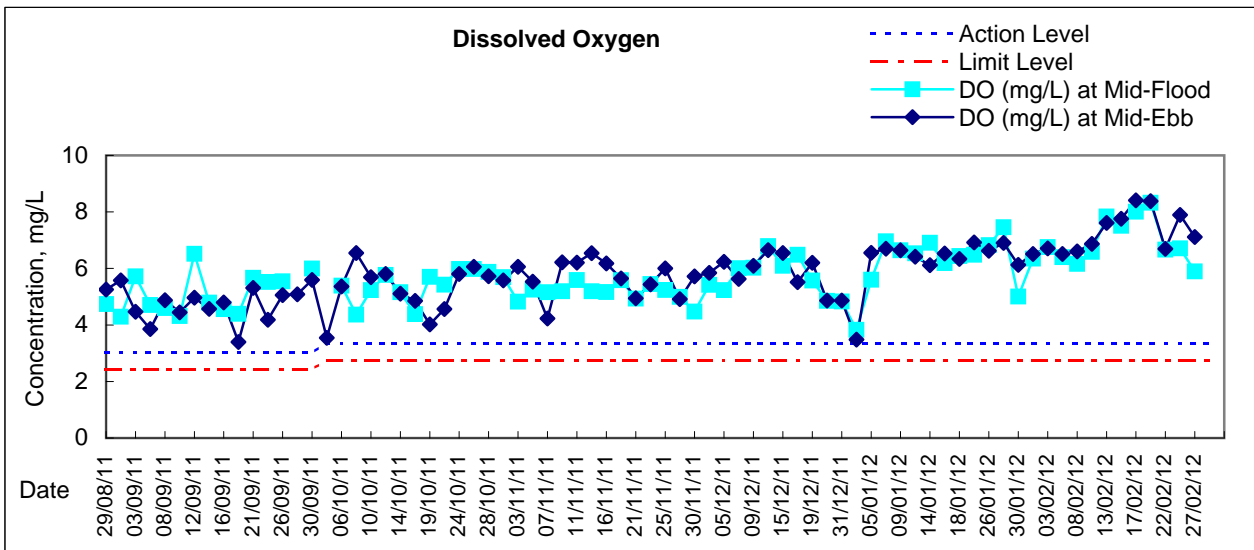


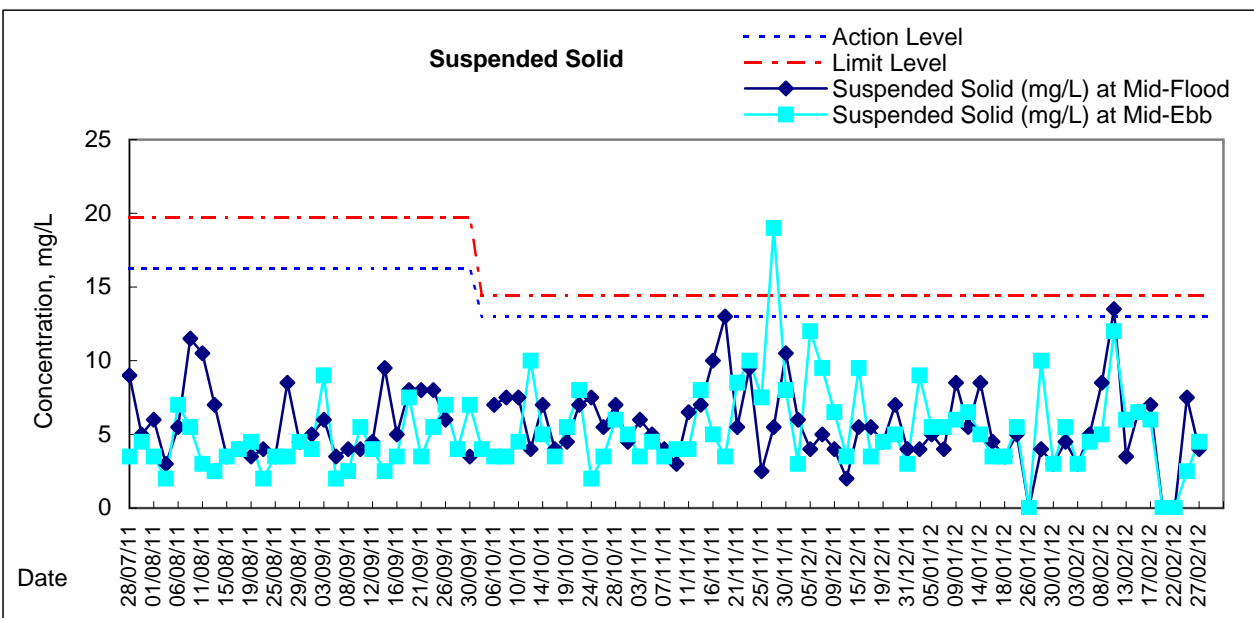
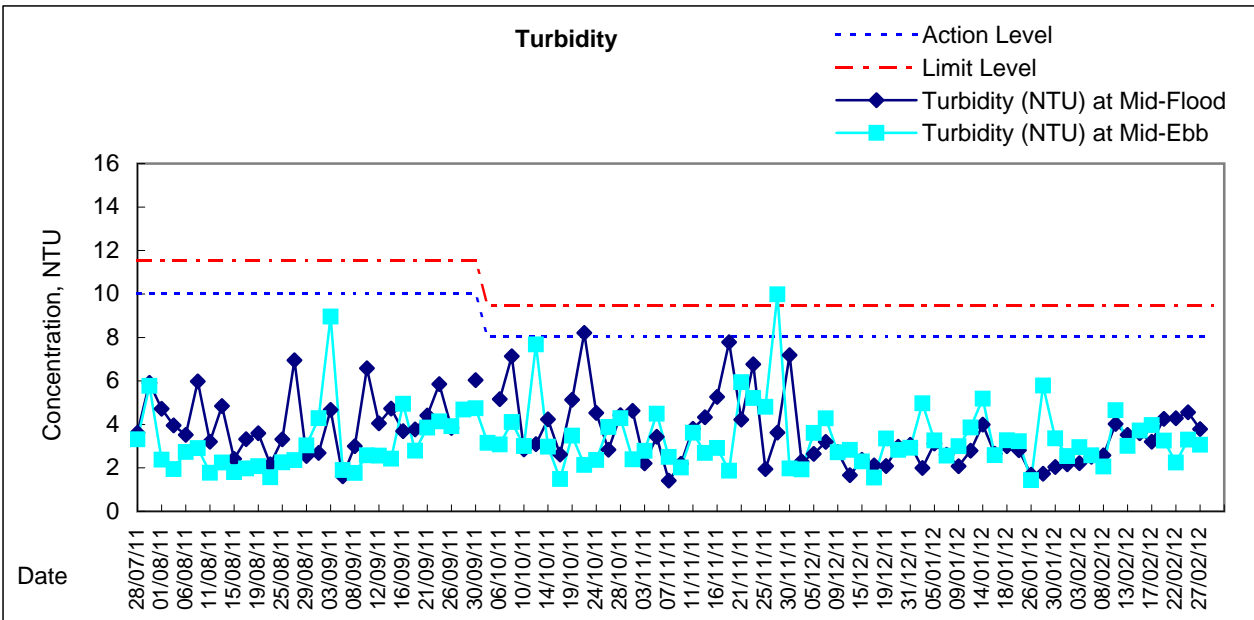
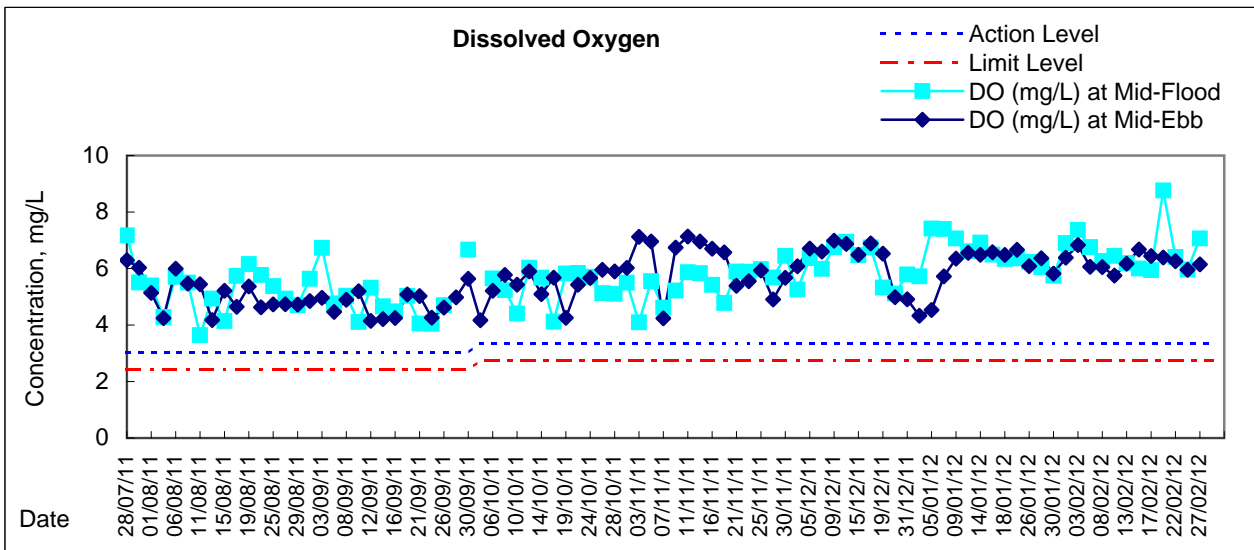


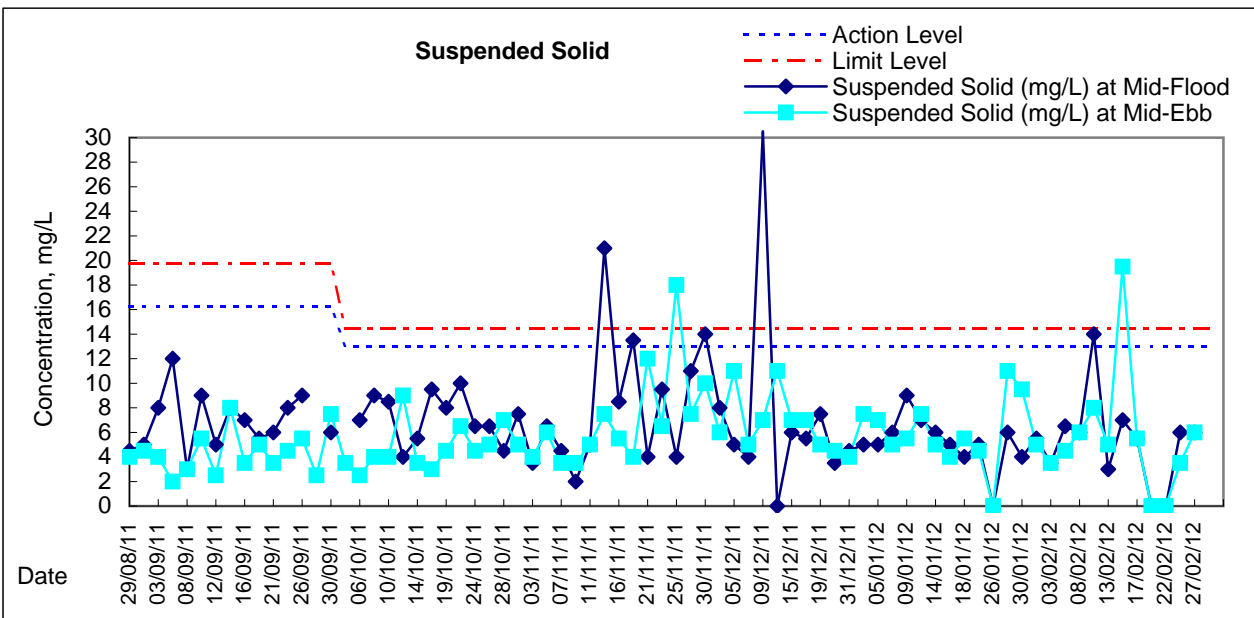
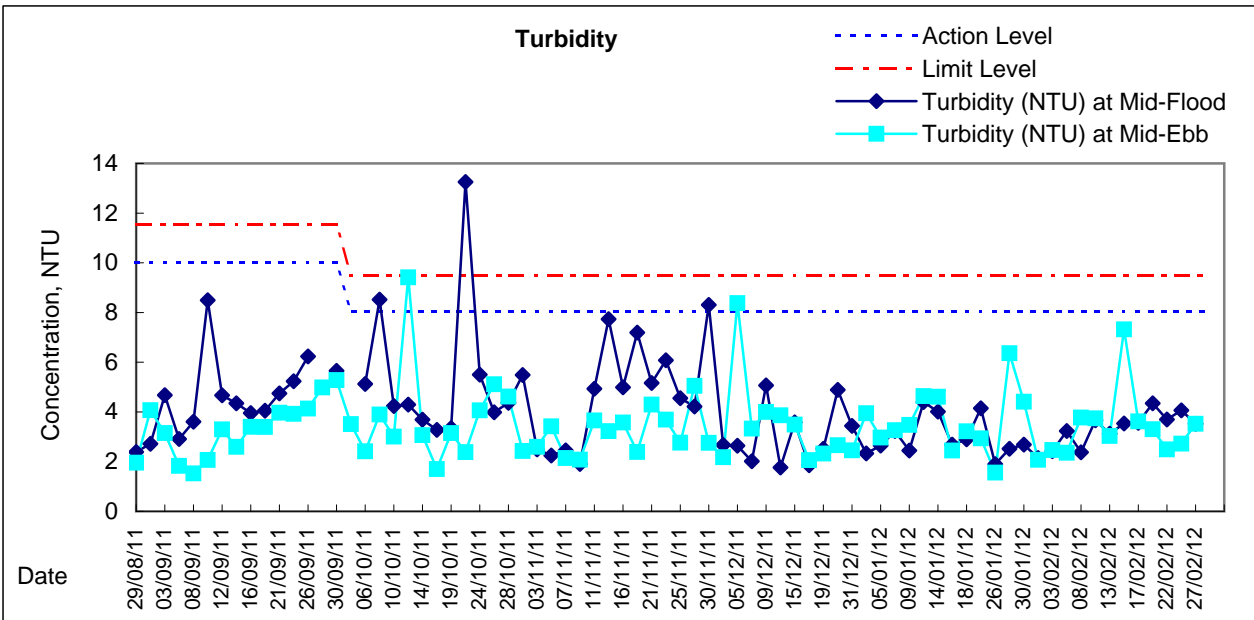
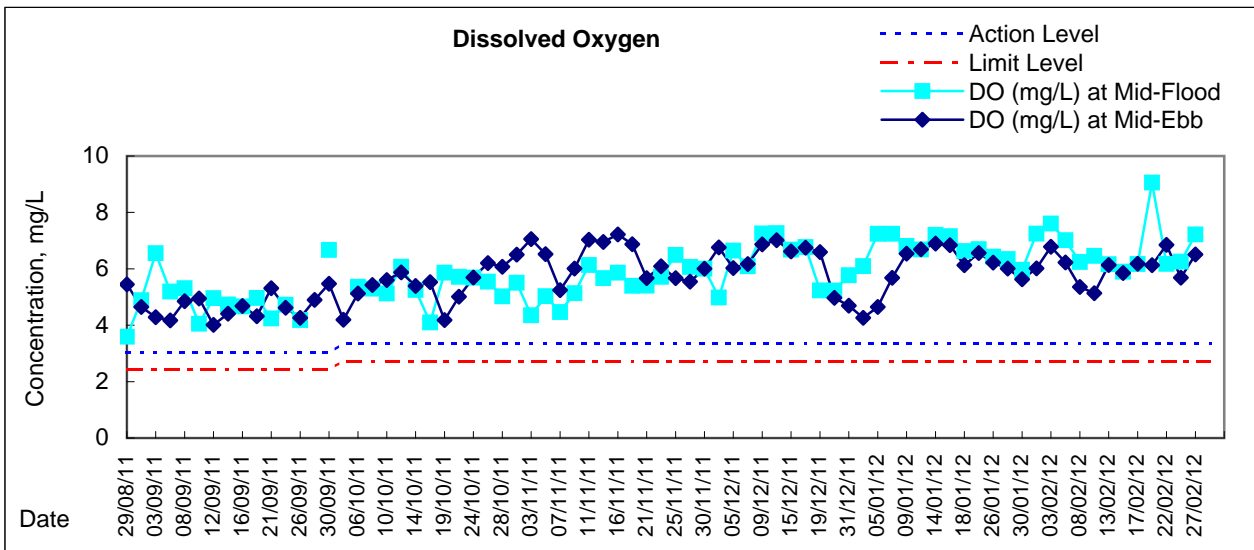


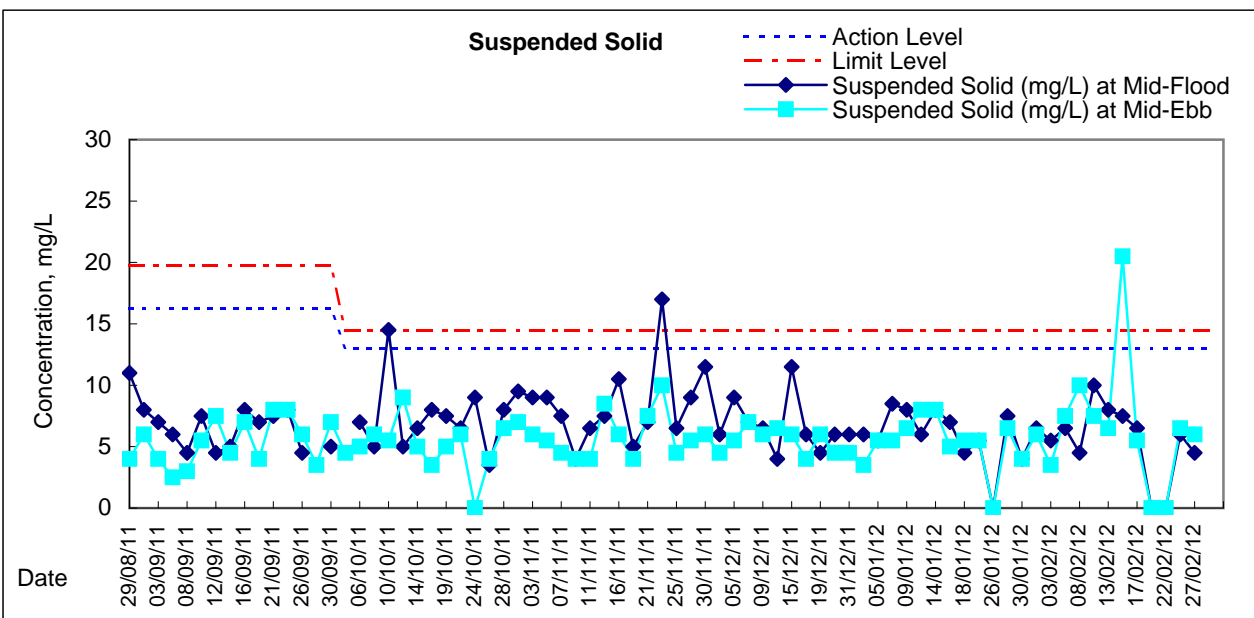
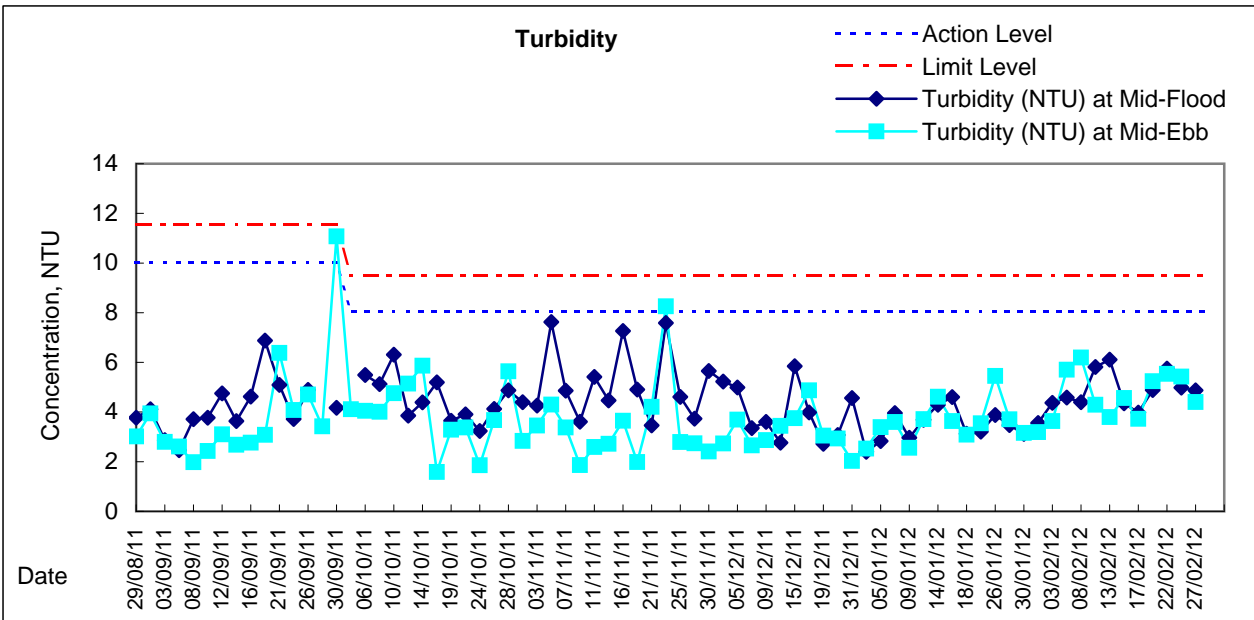
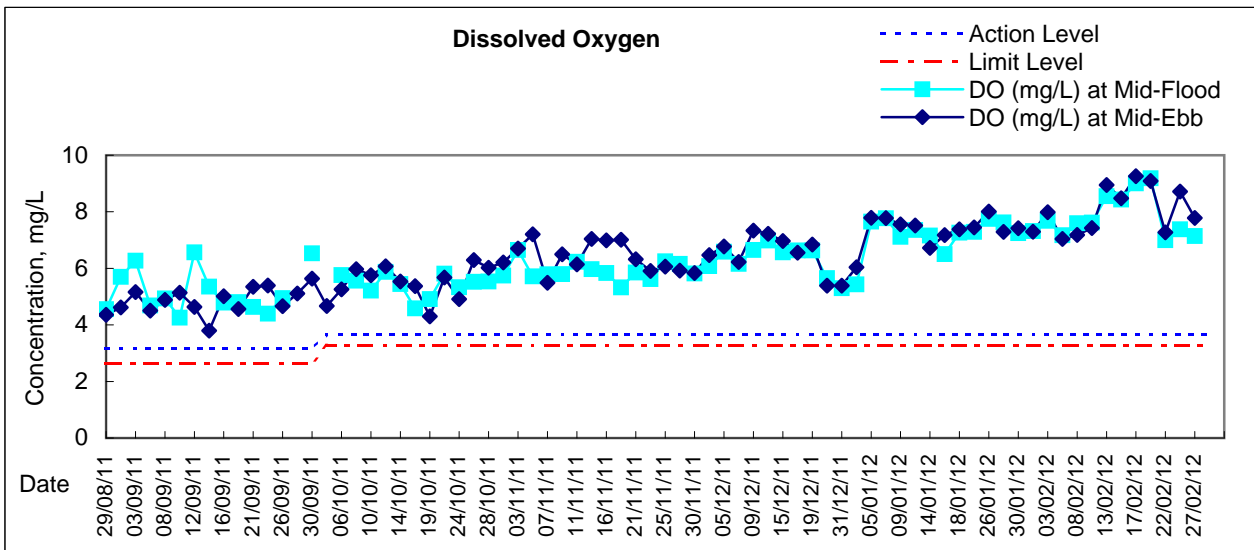


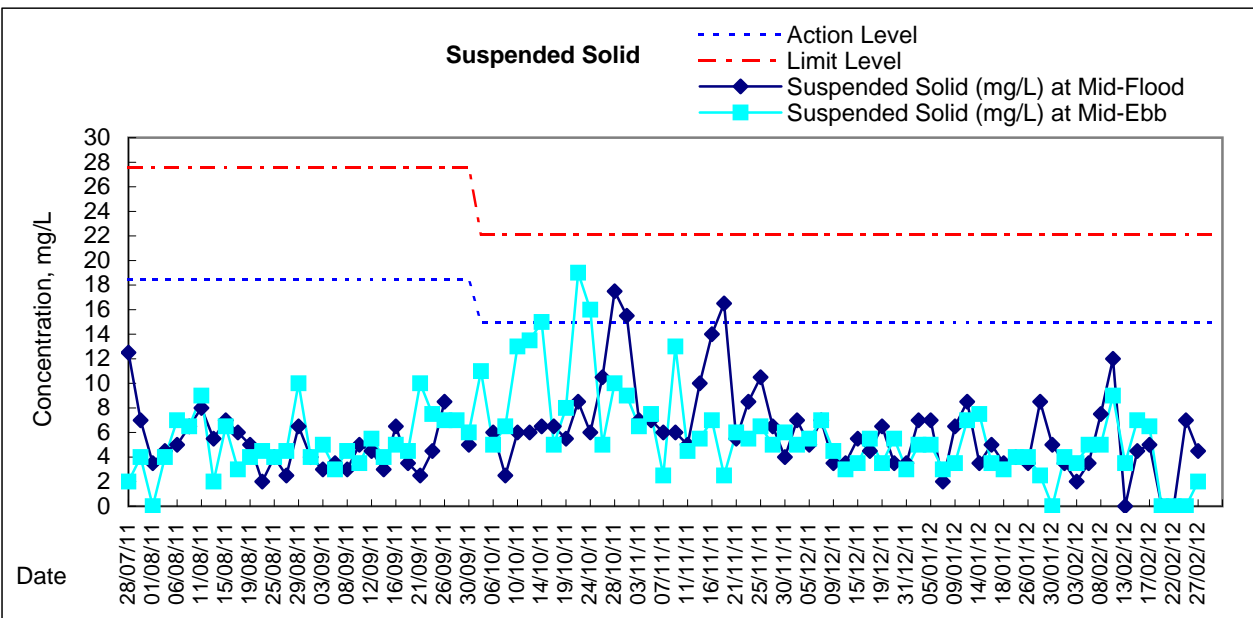
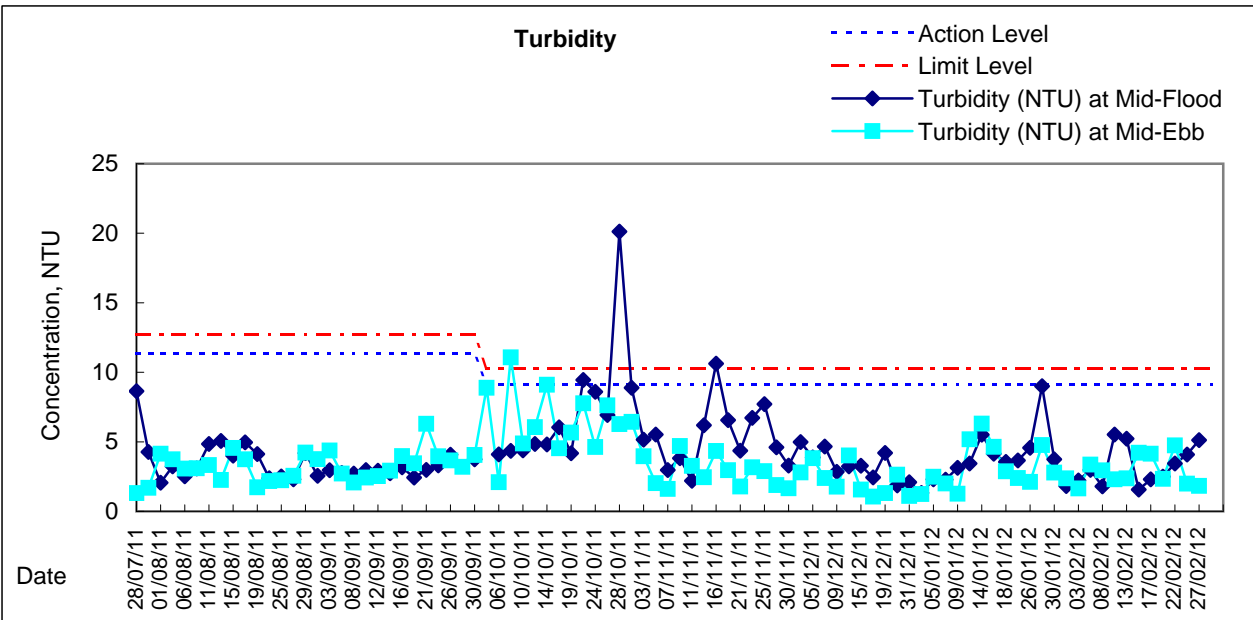
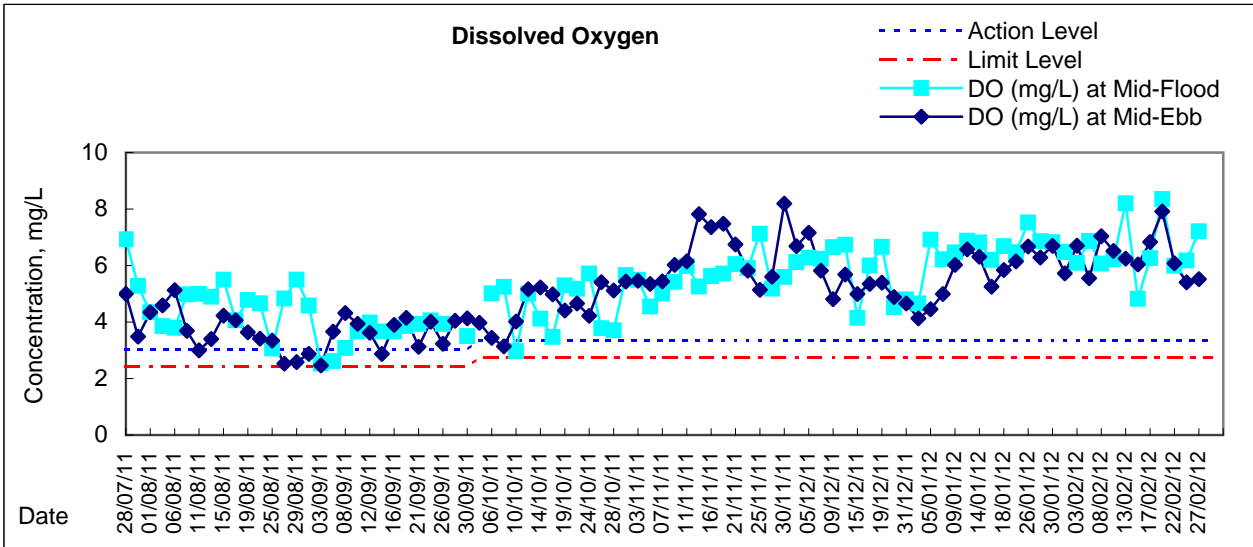
Graphic Presentation of Water Quality Result of C4w - WCT and GEC (Western)





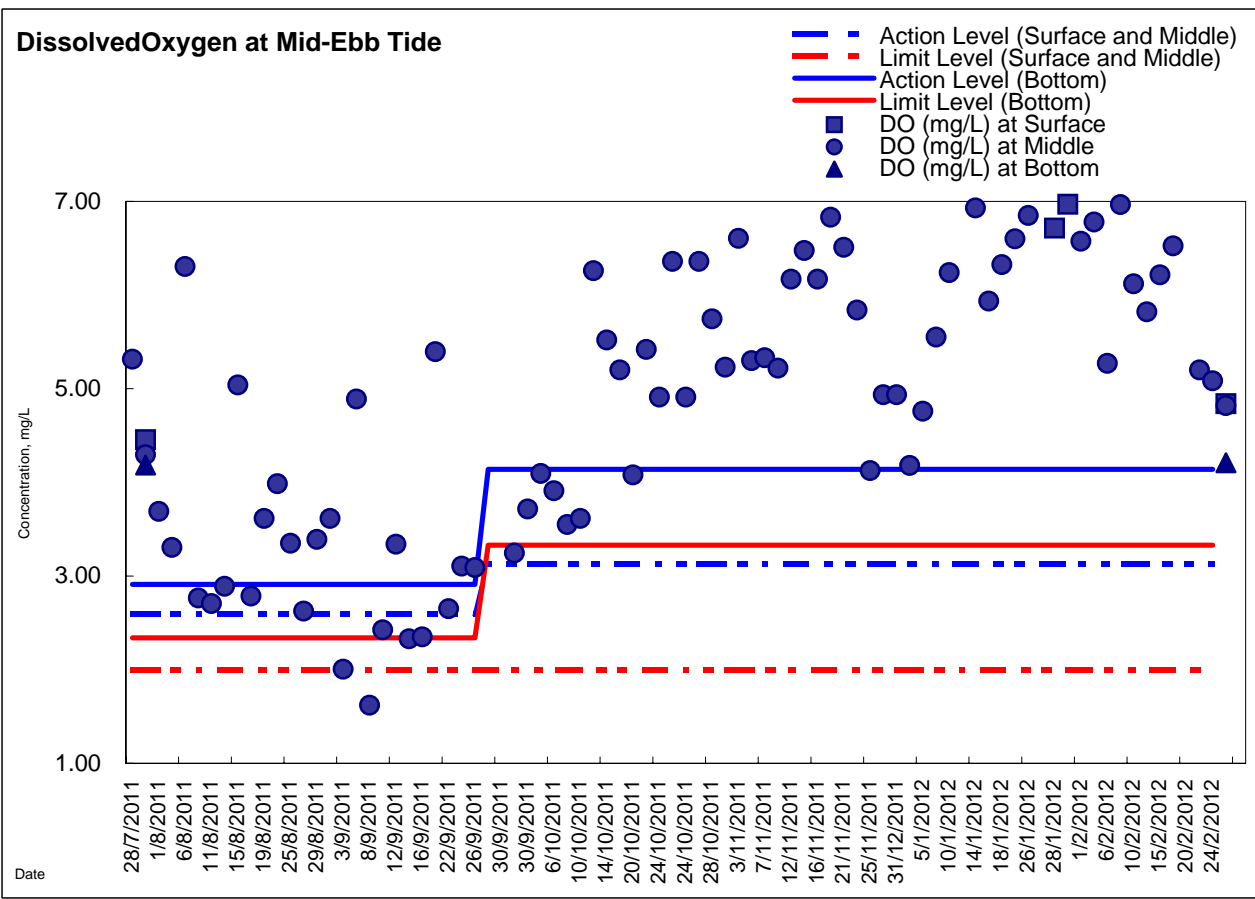
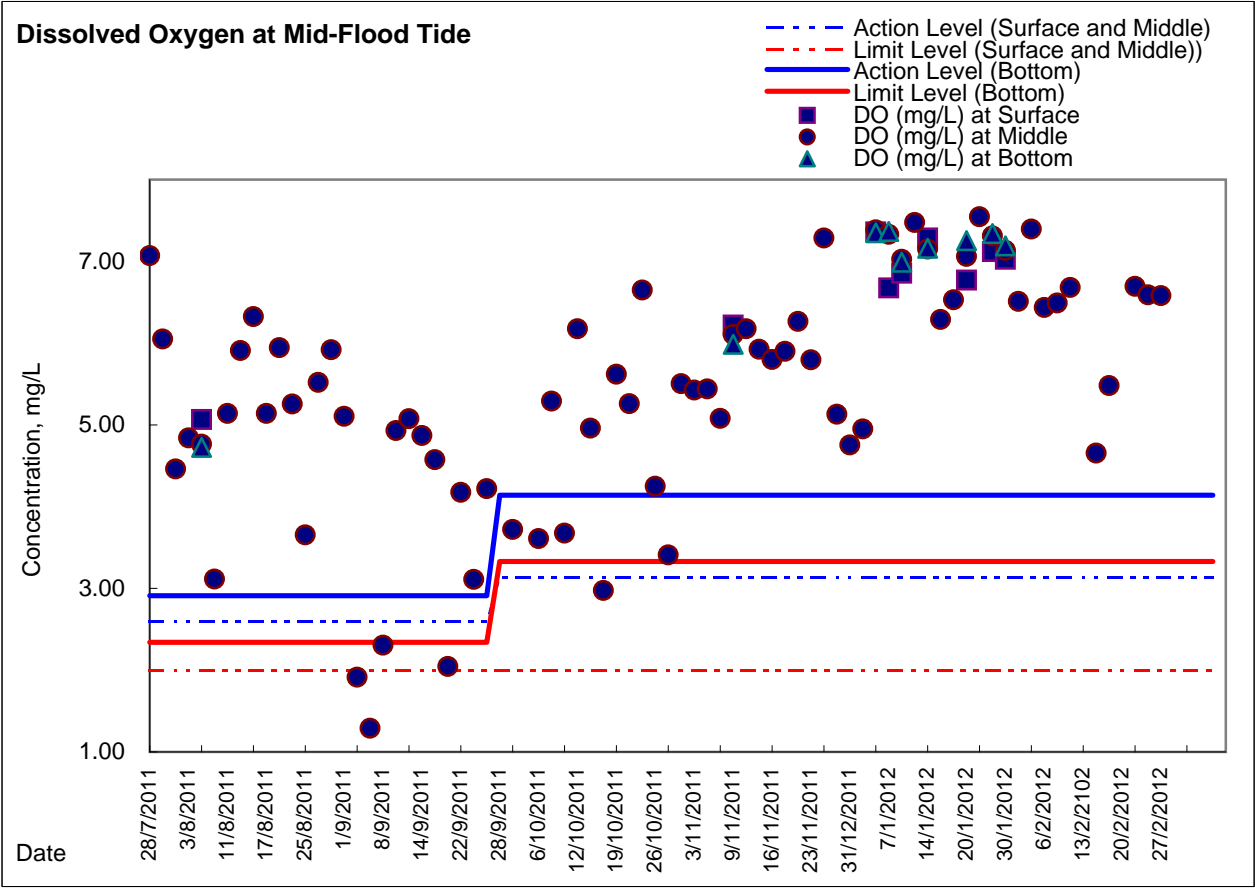




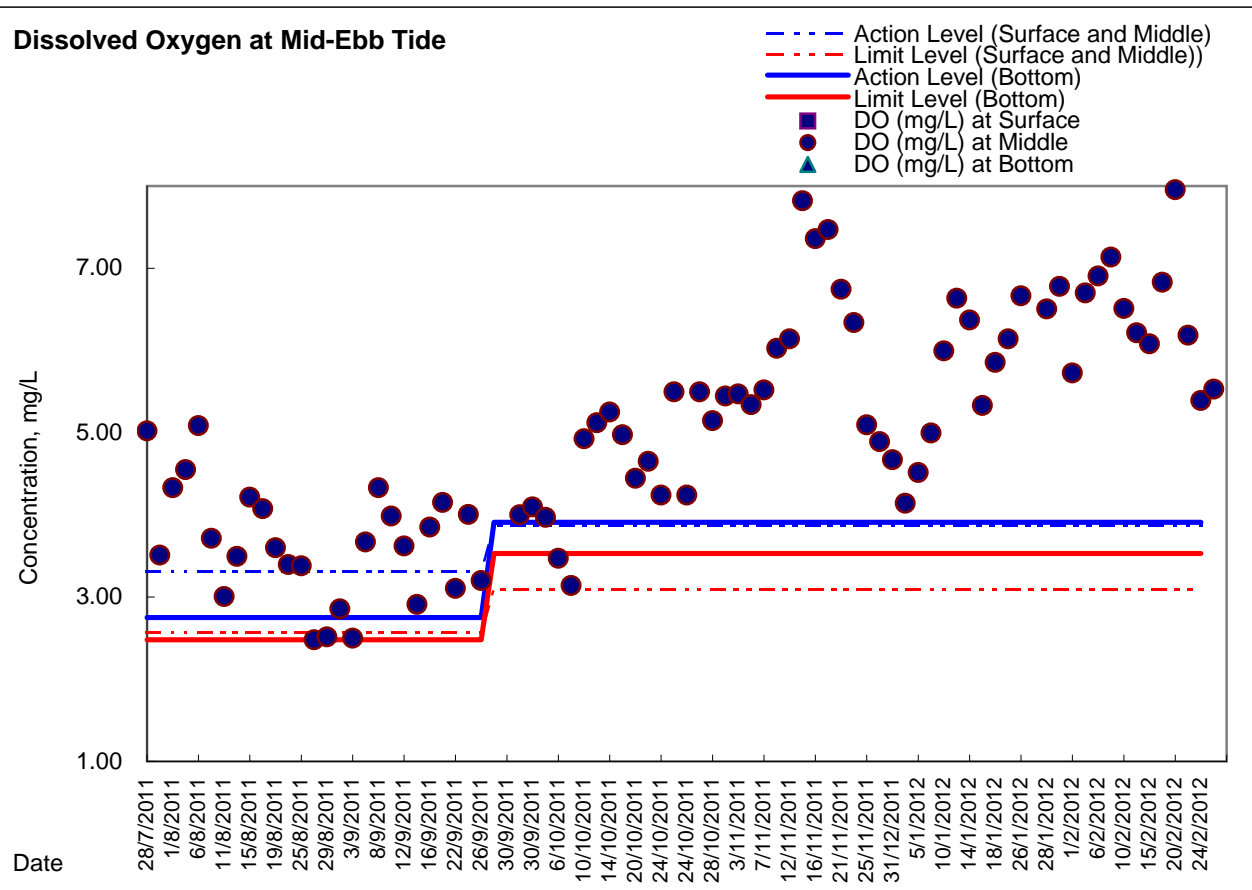
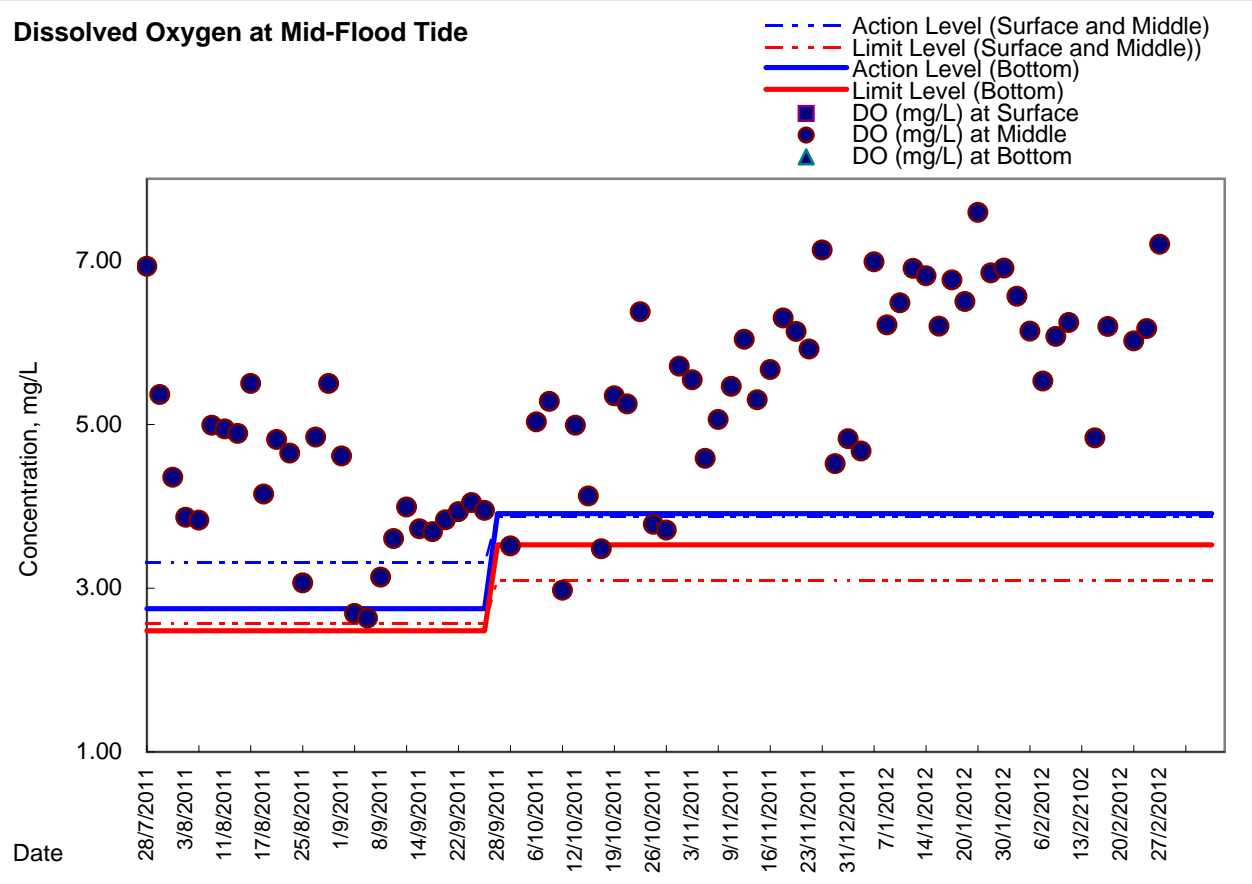




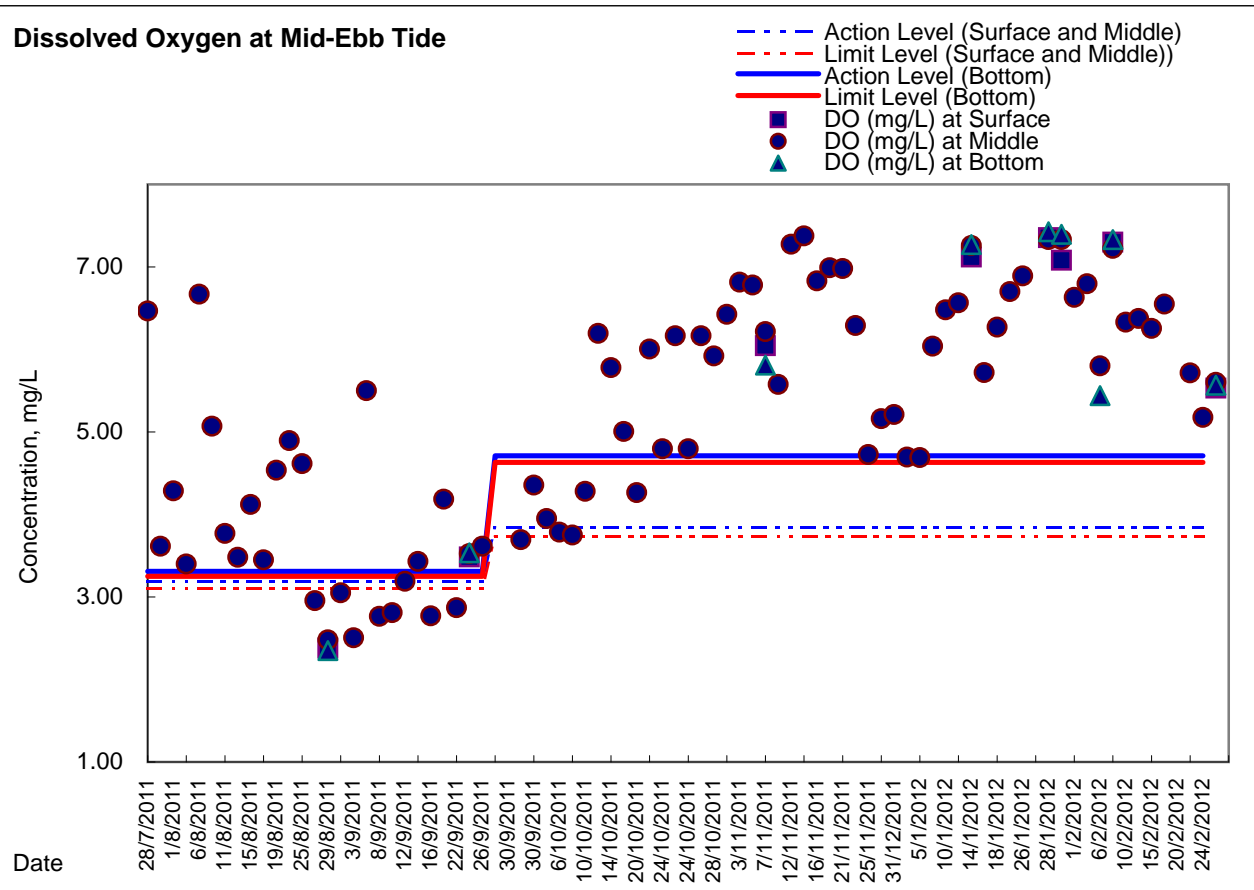
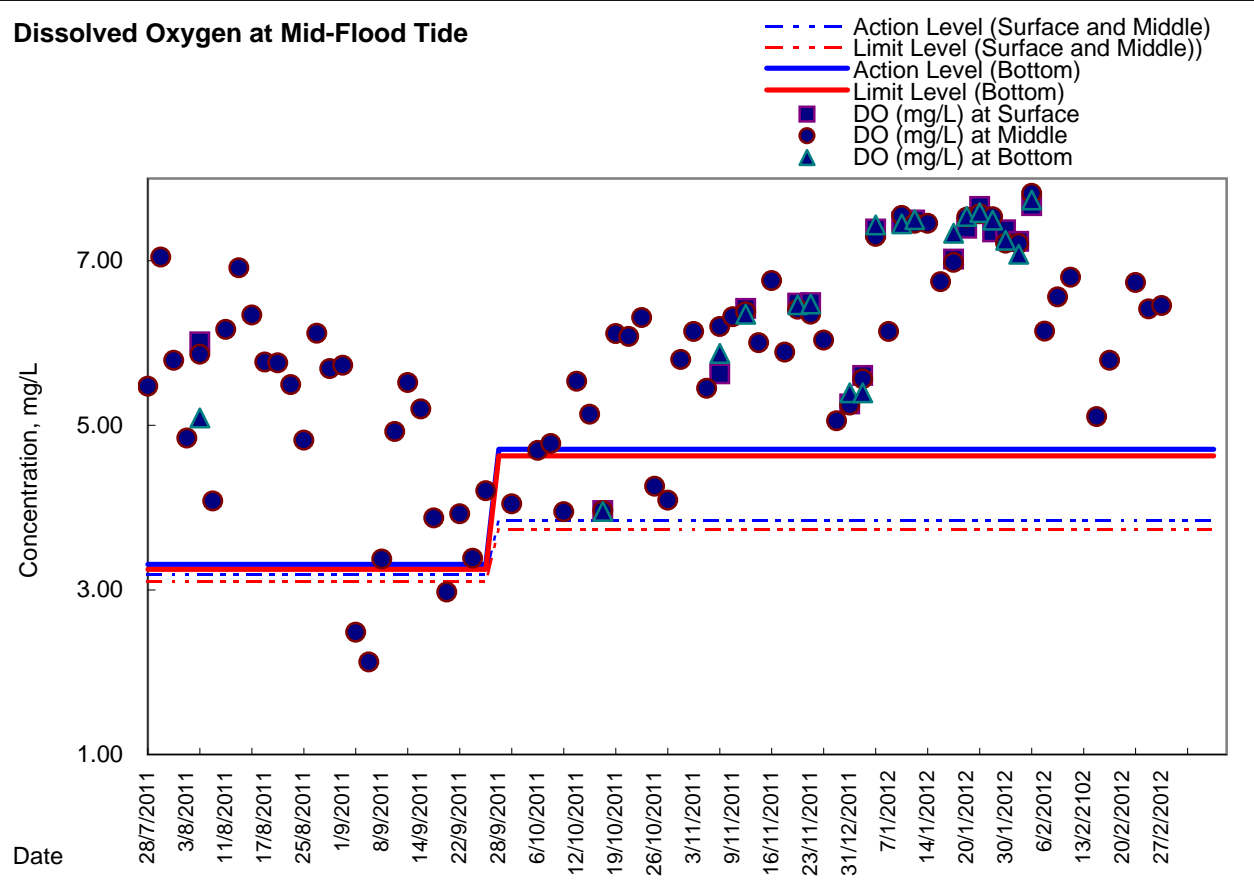
Graphic Presentation of Enhanced Water Monitoring Results (DO) at C6 - Excelsior Hotel



Graphic Presentation of Enhanced Water Monitoring Results (DO) at C7 - Windsor House

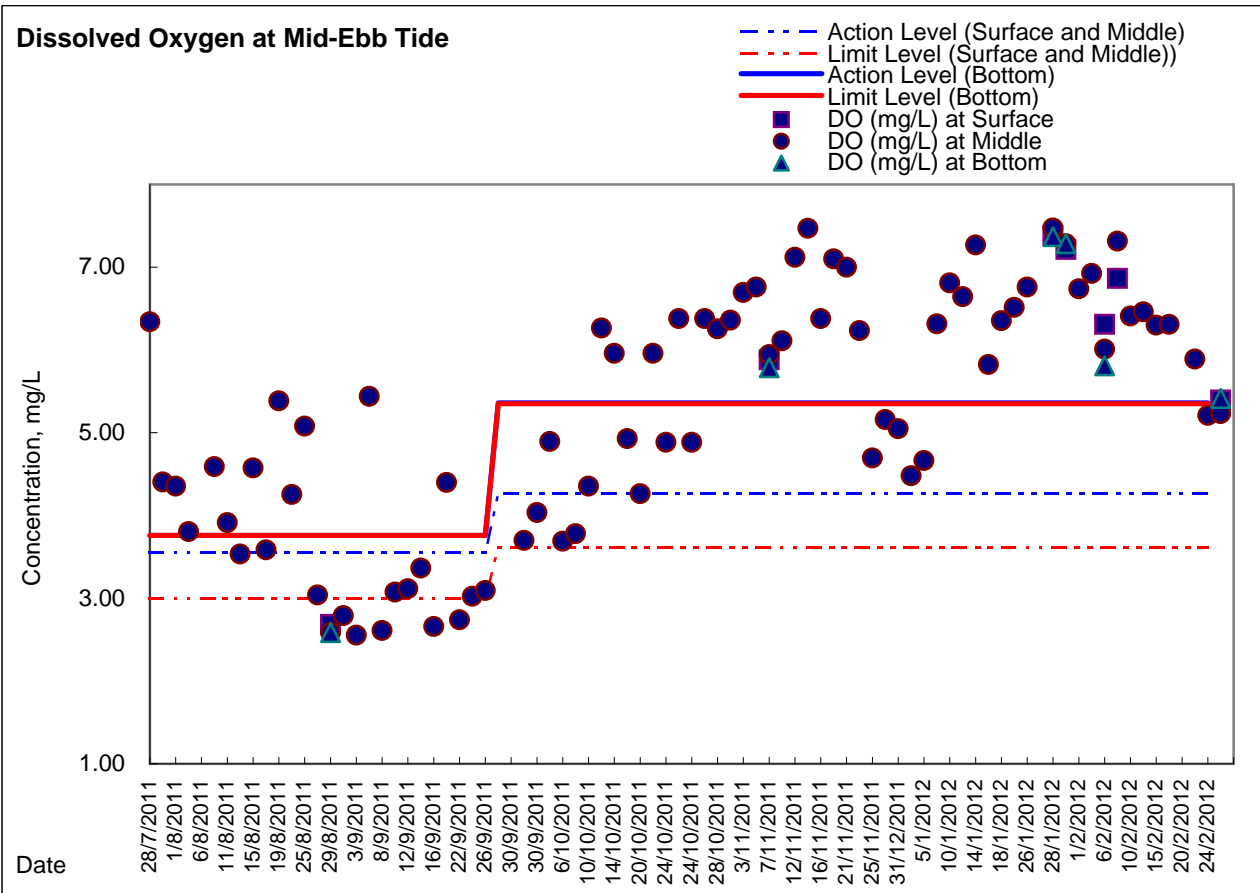
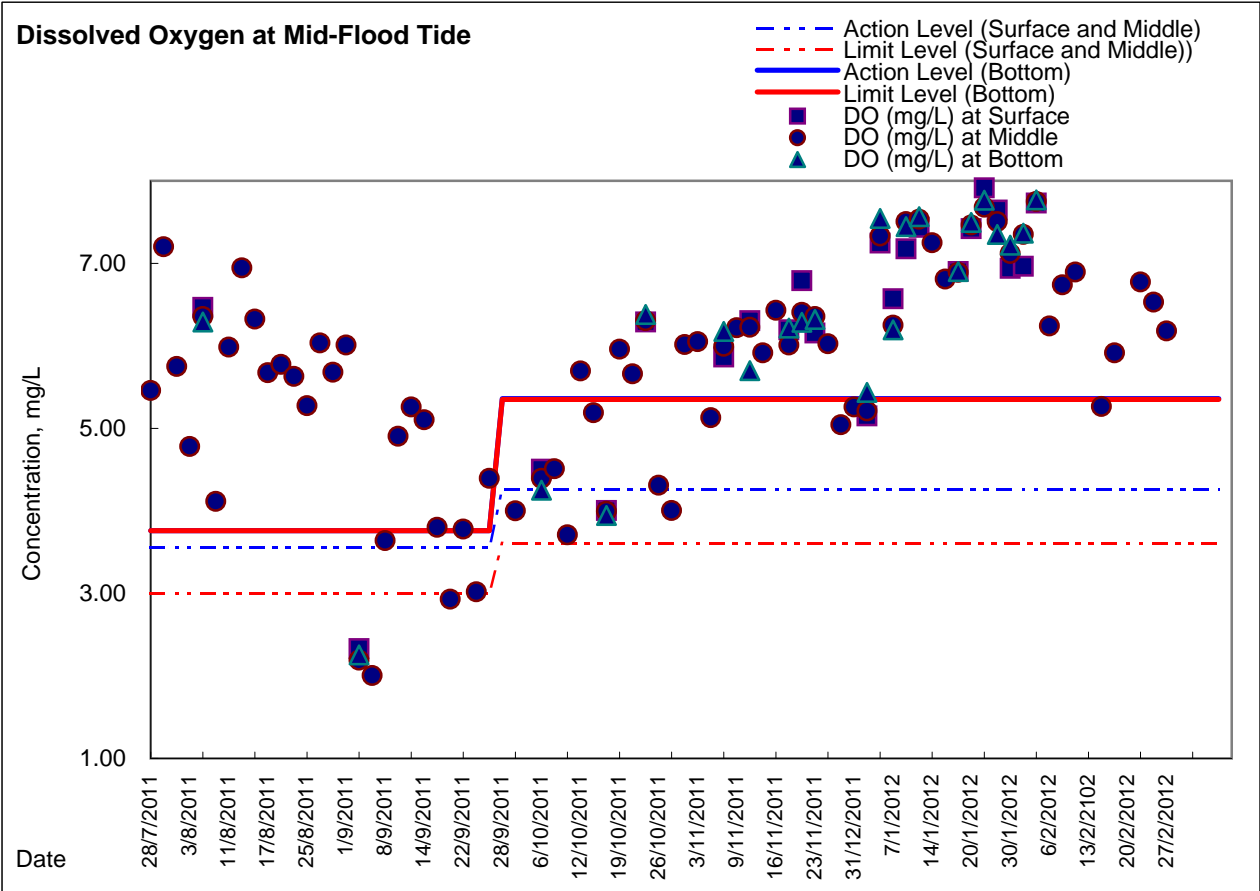


**Graphic Presentation of Enhanced Water Monitoring Results (DO) at Ex-WPCWA SW
- South-western corners of ex-Public Cargo Works Area**

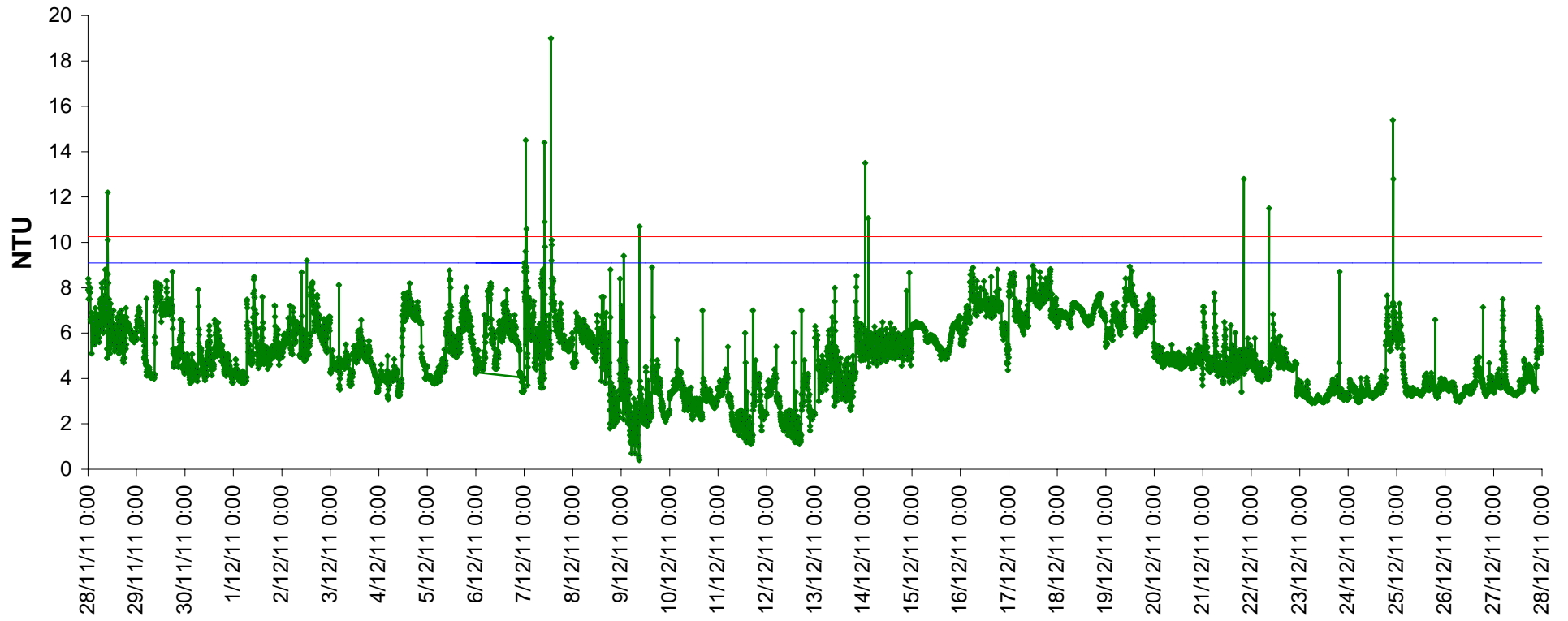




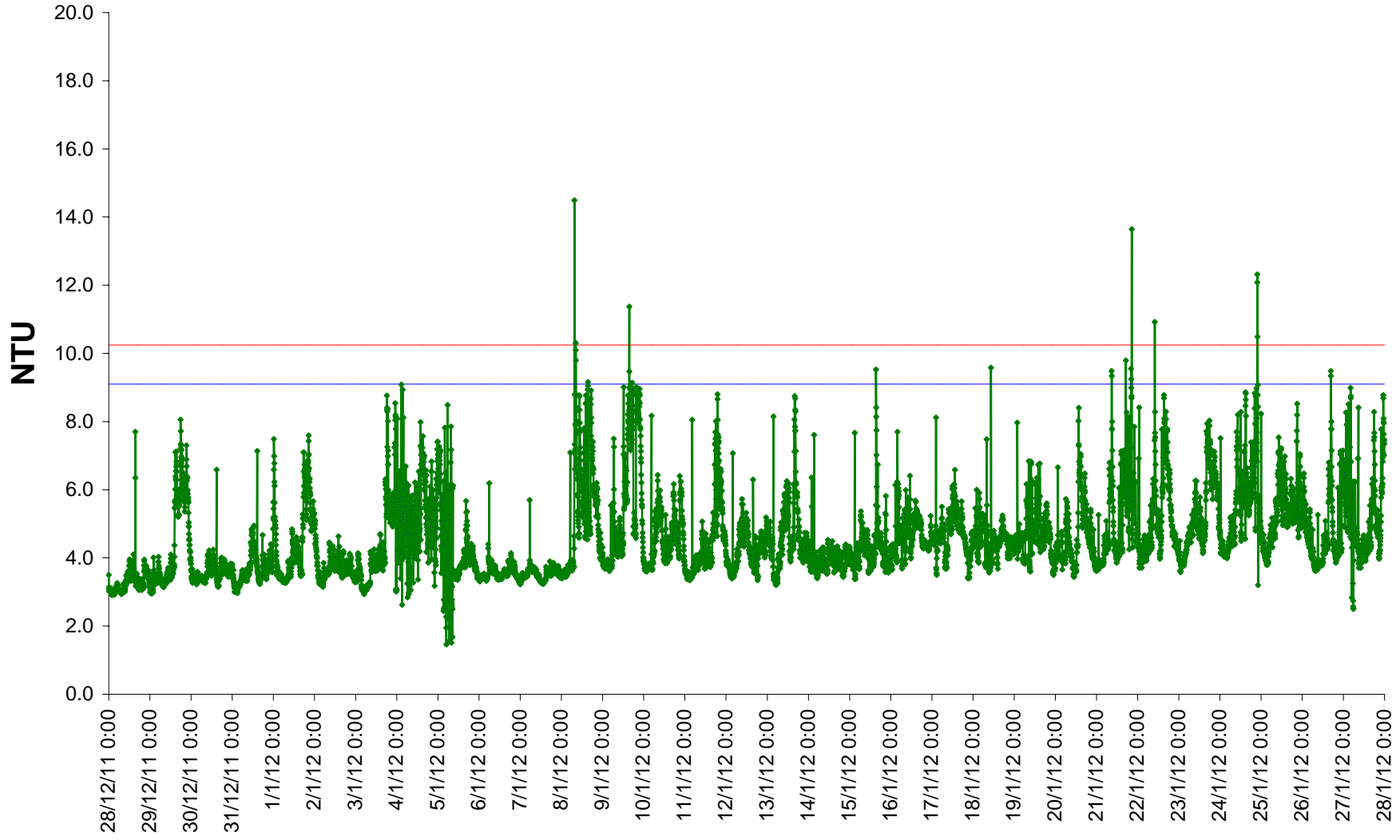
Graphic Presentation of Enhanced Water Monitoring Results (DO) at Ex-WPCWA SE - South-eastern corners of ex-Public Cargo Works Area



C7- 24-hr turbidity



C7- 24-hr turbidity



Date	Time	Weather Condition	Suspended Solids	
			mg/L	
			Value	Average
28/11/11	11:30	Fine	6	5.50
	11:30		5	
29/11/11	11:00	Fine	4	4.00
	11:00		4	
30/11/11	11:50	Fine	4	8.50
	11:50		13	
1/12/11	14:30	Fine	7	6.50
	14:30		6	
2/12/11	11:30	Fine	5	5.50
	11:30		6	
3/12/11	10:30	Fine	11	8.00
	10:30		5	
5/12/11	8:30	Fine	8	7.50
	8:30		7	
6/12/11	17:10	Fine	4	5.00
	17:10		6	
7/12/11	13:50	Fine	6	6.00
	13:50		6	
8/12/11	8:20	Fine	6	5.00
	8:20		4	
9/12/11	8:20	Cloudy	3	3.50
	8:20		4	
10/12/11	10:35	Fine	8	8.00
	10:35		8	
12/12/11	12:05	Fine	11	8.50
	12:05		6	
13/12/11	14:30	Sunny	5	5.50
	14:30		6	
14/12/11	10:30	Fine	4	4.00
	10:30		4	
15/12/11	11:30	Fine	2	2.00
	11:30		<2	
16/12/11	11:30	Fine	<2	<2
	11:30		<2	
17/12/11	12:45	Sunny	3	3.50
	12:45		4	
19/12/11	11:20	Sunny	3	3.50
	11:20		4	
20/12/11	8:00	Fine	<2	<2
	8:00		<2	
21/12/11	9:00	Fine	3	3.00
	9:00		3	
22/12/11	10:30	Fine	8	8.00
	10:30		8	

Daily SS Moniotring at C7 - Windsor House

